

Sold

17 Lerwick Avenue, Hazelwood Park



IN THE HEART OF THE EASTERN SUBURBS

Beautifully positioned just half a block from popular Wood Park & playground this neatly presented, solid brick, stone fronted home offers 3 bedrooms, formal lounge or potential 4th bedroom, spacious family room, reverse cycle air conditioning, attractive polished floorboards, recently upgraded kitchen, outdoor entertaining area & undercover parking for 3 cars.

Situated on approximately 668 square metres in the Linden Park Primary School and Glenunga International High School zones this is a great opportunity to further improve the existing home or build in this desirable location (subject to council consent).

Auction: Saturday 21st March at 3pm (unless sold prior).

For further information or to arrange an inspection please phone Matt Scarce on 8332 1022 or 0411 185 205.

 3  1  3  668 m²

Price	SOLD
Property Type	Residential
Property ID	532
Land Area	668 m ²

Agent Details

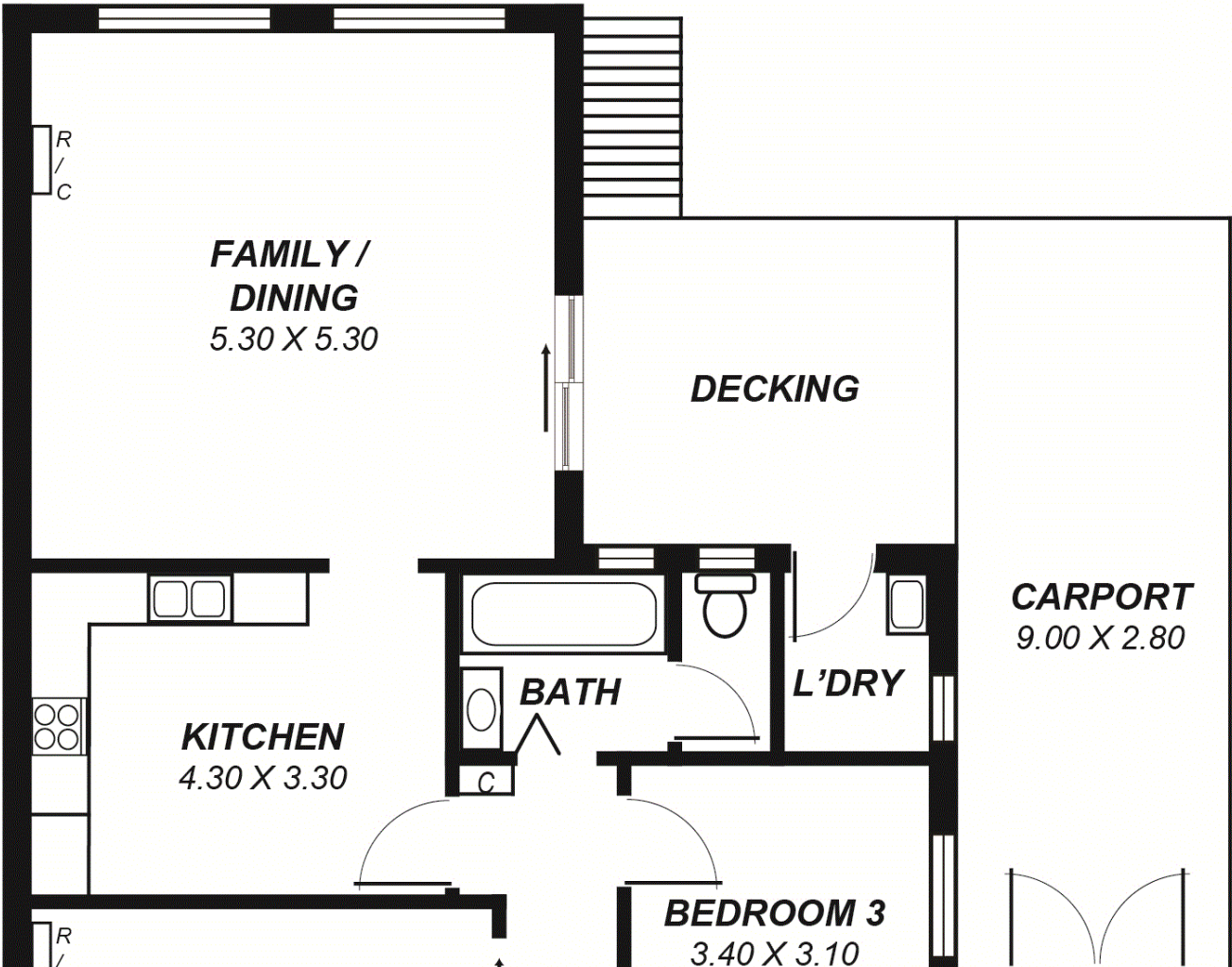
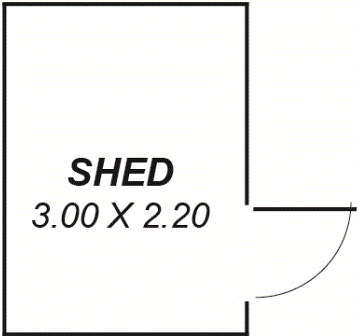
Matt Scarce - 0411 185 205

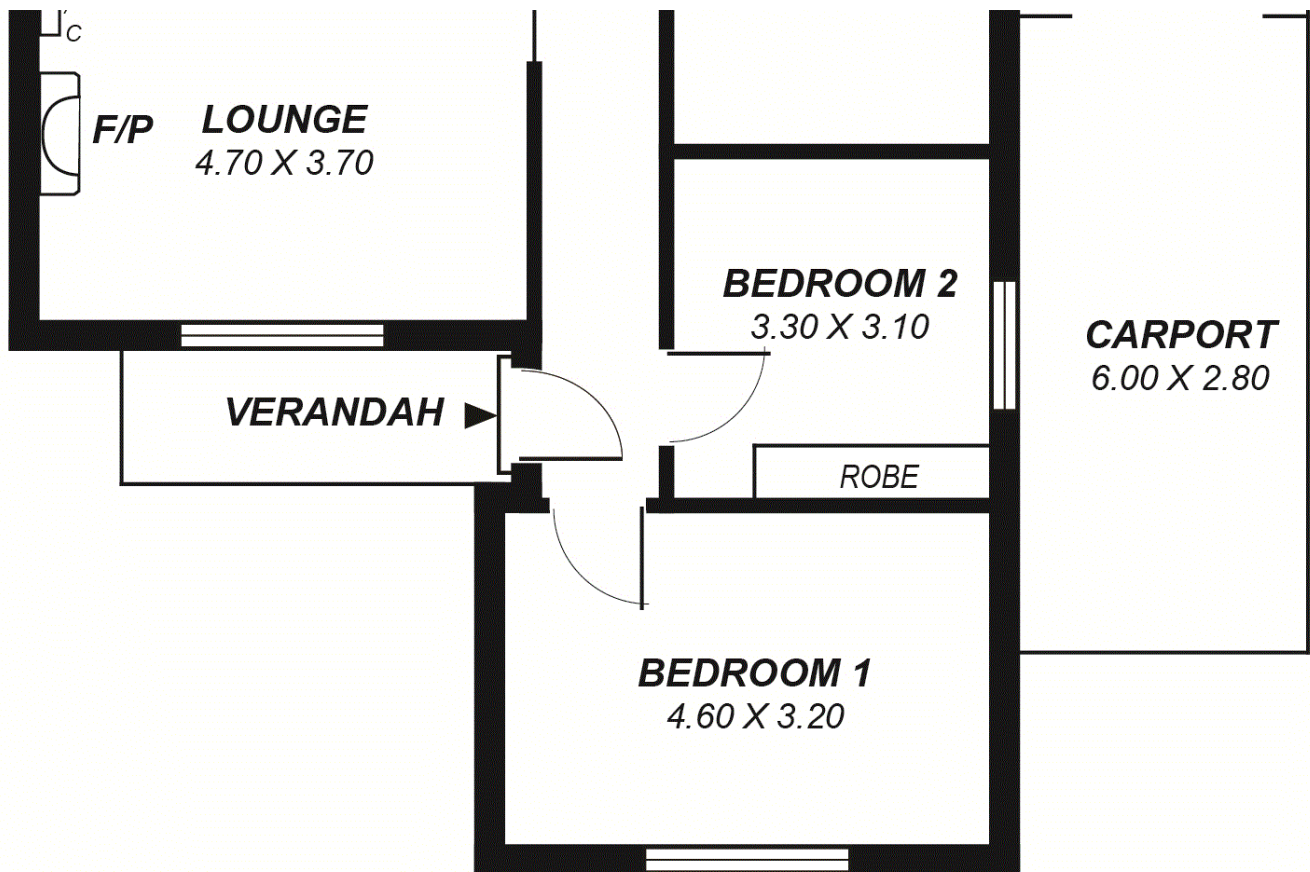
Office Details

Tusmore
457 Greenhill Road Tusmore
SA 5065 Australia
08 8332 1488

SCARCE
REAL ESTATE

The above information provided has been furnished to us by the vendor/s. We have not verified whether or not that information is accurate and do not have any belief in one way or the other in its accuracy. We do not accept any responsibility to any person for its accuracy and do no more than pass it on. All interested parties should make and rely upon their own inquiries in order to determine whether or not this information is in fact accurate.





*This drawing is for illustration purposes only .
All measurements are approximate and details intended
to be relied upon should be independently verified.*