

Sold



Unit 5/ 3 Mulberry Ct, Magill



Courtyard Style Home with a Large and Private Rear Garden

This well planned, courtyard style home packs some punch in terms of size and location, and is sited within a village-like, Strata Title development.

The feeling of comfort, convenience and space will appeal to a broad range of buyers either as a very first home, a low maintenance abode or an astute investment.

The thoughtful design comprises of two well-proportioned bedrooms, a roomy lounge overlooking a front balcony, a dining room with sliding door garden access, an adjacent kitchen and servery, a bathroom with a bath and separate shower, a laundry within easy reach of the rear clothes-line and a single carport with a roller door.

With a convenient location, near to Rostrevor College, the Uni SA Magill Campus, Morialta Conservation Park, community facilities, local shops, cafes, restaurants and Public Transport, this property will be in high demand.

 2  1  1

Price	SOLD
Property Type	Residential
Property ID	1743

Agent Details

Matt Scarce - 0411 185 205

Office Details

Tusmore
457 Greenhill Road Tusmore
SA 5065 Australia
08 8332 1488

SCARCE
REAL ESTATE

For further information or to arrange an inspection please contact Matt Scarce on (08) 8332 1022 or 0411 185 205.

Interior features include -

A Daikin split system air-conditioner

Built-in robes in both bedrooms

A rear garden outlook from the master bedroom

A generous kitchen bench-top also serving as a breakfast bar

A floor-to-ceiling pantry

A floor-to-ceiling linen press in the hallway adjacent the bathroom

Heritage style feature tiling in the bathroom and kitchen

A neutral colour theme throughout together with crisp white ceilings

Exterior features include –

A front security screen door

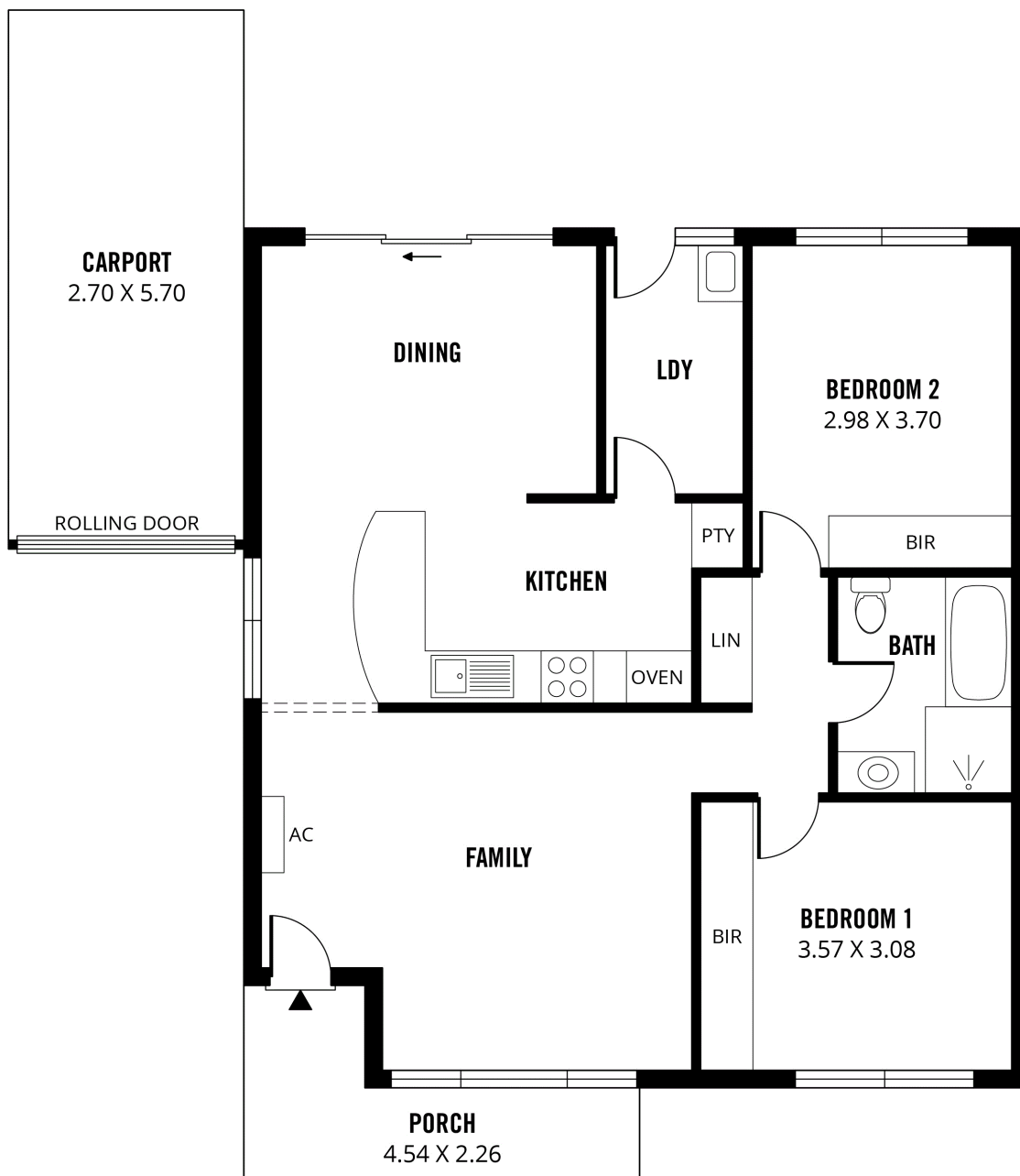
A generous and private rear garden with level lawn

Room for an additional car to park in the driveway

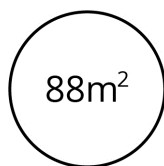
Access through the carport into the rear garden

A shady front balcony

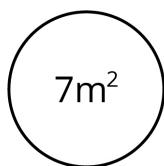
The above information provided has been furnished to us by the vendor/s. We have not verified whether or not that information is accurate and do not have any belief in one way or the other in its accuracy. We do not accept any responsibility to any person for its accuracy and do no more than pass it on. All interested parties should make and rely upon their own inquiries in order to determine whether or not this information is in fact accurate.



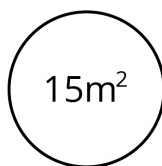
TOTAL



Living



Porch



Carport



Scale in metres. This drawing is for illustration purposes only. All measurements are approximate and details intended to be relied upon should be independently verified. Produced by **The Fotobase Group**