

Sold



33/ 44 Glynburn Road, Hectorville



**Offers Now Closing this Wednesday, 15/12 at 12pm**

Recently upgraded throughout, this immaculate single level unit will appeal to both home buyers and investors. The property is extremely well located and is just a short stroll from the Firlie Shopping Centre and other outstanding local facilities.

Offering spacious accommodation, the property comprises of a generous living room overlooking a large front lawn area, 2 good size bedrooms including the master bedroom with built-in robes, an upgraded kitchen with a large pantry and stainless steel appliances (including a gas cook-top), a stylish, fully tiled bathroom with a semi-frameless shower screen and a renovated, separate, fully tiled laundry.

Other features include reverse cycle and split system air-conditioning, LED lighting throughout, a large storage cupboard, good size garden shed and an undercover carport with driveway space for parking a further vehicle off-street.

This move-in ready home is a great lifestyle opportunity in a

2 1 1

Price	SOLD
Property Type	Residential
Property ID	1724

### Agent Details

Matt Scarce - 0411 185 205

### Office Details

Tusmore  
457 Greenhill Road Tusmore  
SA 5065 Australia  
08 8332 1488

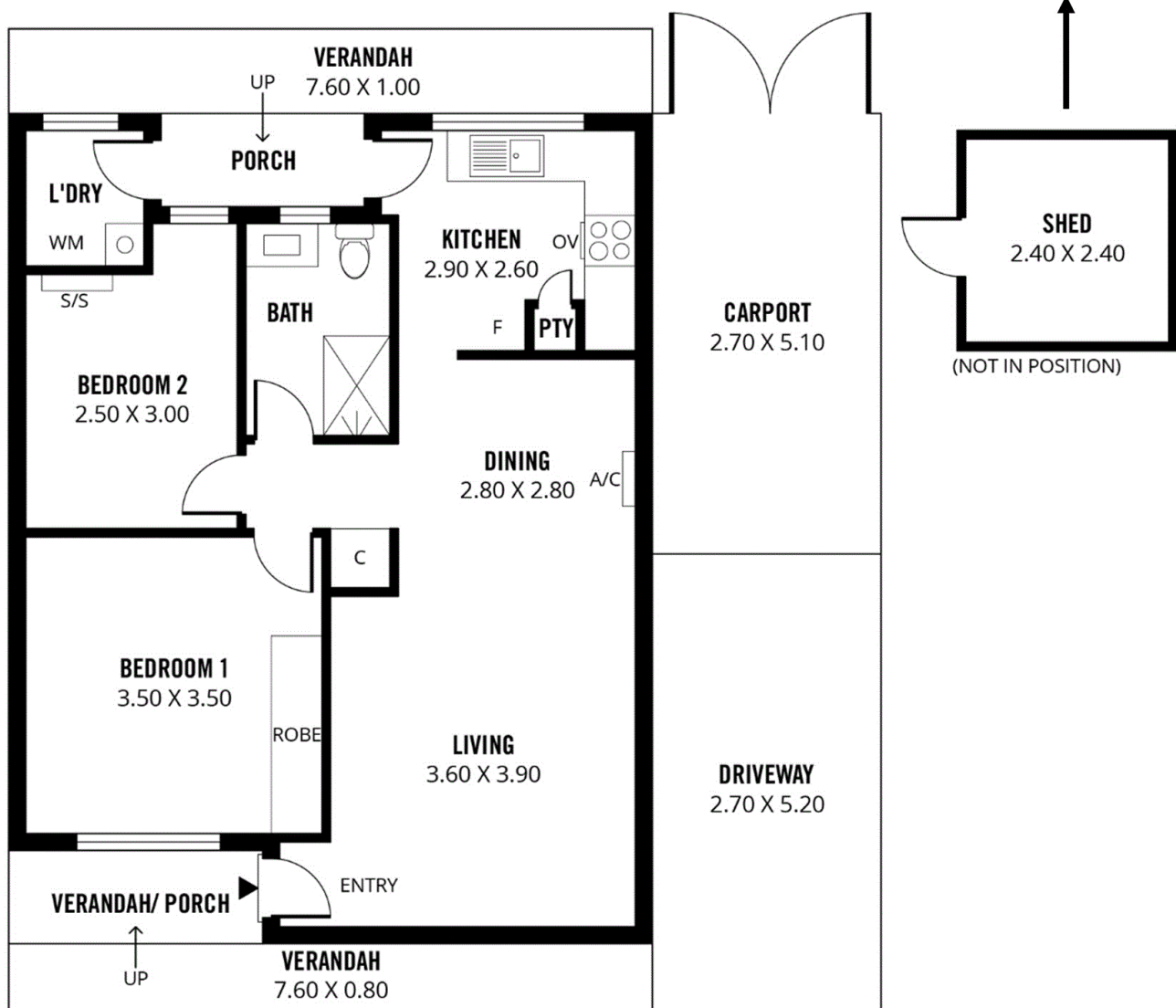
**SCARCE**  
REAL ESTATE

sought-after suburb close to popular cafes and less than 7km's from the CBD.

Offers Now Close this Wednesday, 15th December 2021 at 12pm.

For further information or to arrange an inspection please contact Matt Scarce on 8332 1022 or 0411 185 205.

The above information provided has been furnished to us by the vendor/s. We have not verified whether or not that information is accurate and do not have any belief in one way or the other in its accuracy. We do not accept any responsibility to any person for its accuracy and do no more than pass it on. All interested parties should make and rely upon their own inquiries in order to determine whether or not this information is in fact accurate.



110m<sup>2</sup>

**TOTAL**



69m<sup>2</sup>

Living



7m<sup>2</sup>

Shed



14m<sup>2</sup>

Carport



20m<sup>2</sup>

Porch/  
Verandah



Scale in metres. This drawing is for illustration purposes only. All measurements are approximate and details intended to be relied upon should be independently verified.

Produced by **The Fotobase Group**