

Sold



Unit 2, 17 Hoods Rd, Northfield



Spacious Freestanding Unit with a Huge Backyard

If you're in the market for a unit with a difference look no further! This spacious 2 bedroom freestanding unit boasting comfortable accommodation, undercover parking and a huge backyard is a rare find!

One of only 3 units in the group and quietly located at the end of a long tree-lined driveway. The unit is set well back from the road offering complete privacy.

Features you will love about this home include:

- 2 comfortable bedrooms both with built-in robes
- A functional kitchen with a gas cooker and twin sinks
- A separate lounge and separate dining room with a wall mounted reverse cycle air-conditioner
- A neat bathroom including a bath and a shower with a separate toilet
- Roller security shutters on rear facing windows
- A large laundry with plenty of storage space

 2  1  1

Price	SOLD
Property Type	Residential
Property ID	1716

Agent Details

Matt Scarce - 0411 185 205

Office Details

Tusmore
457 Greenhill Road Tusmore
SA 5065 Australia
08 8332 1488

SCARCE
REAL ESTATE

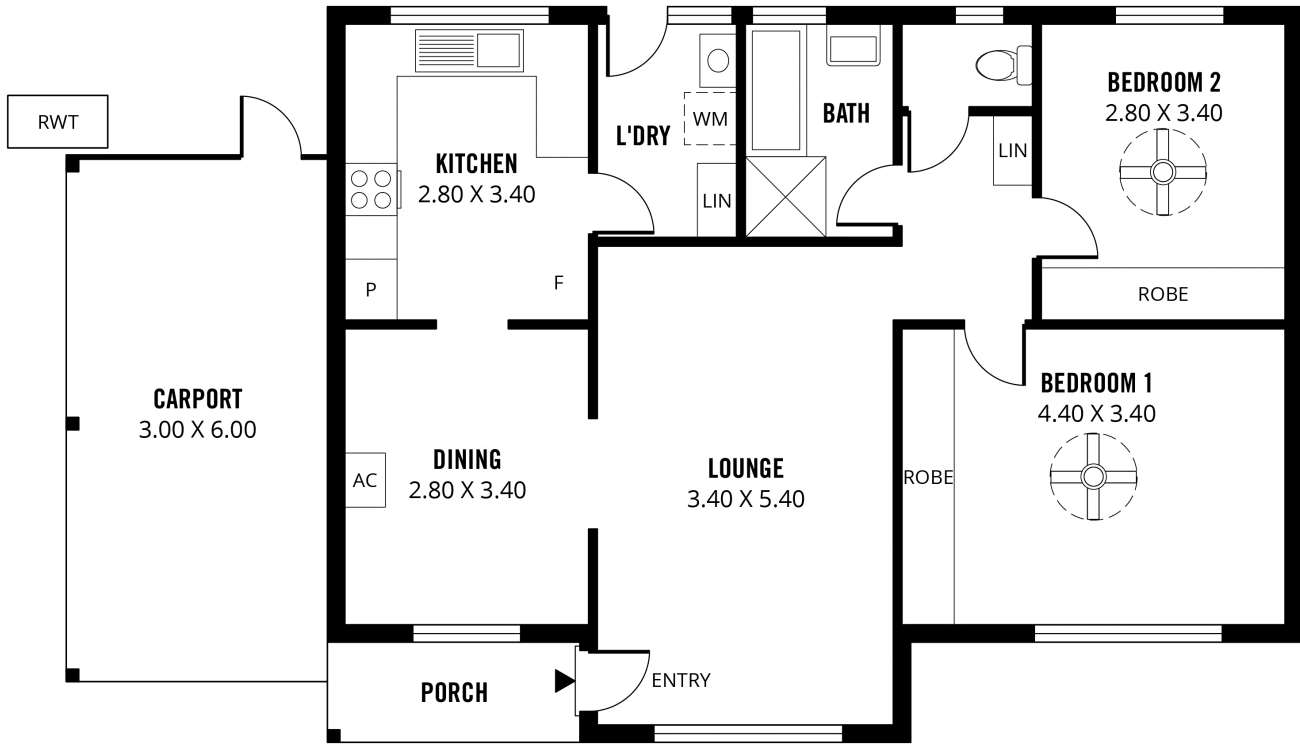
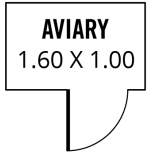
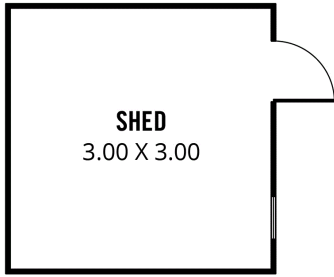
- An undercover carport and garden shed
- A huge enclosed back-yard and a low maintenance front garden

This is a fantastic opportunity for first home buyers or investors looking for that property with something extra. Close to local shops including the Northgate Shopping Centre, near to Stockade Botanical Park, Public Transport, Roma Mitchell Secondary School and Northfield Primary School.

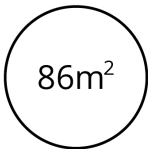
Currently leased at \$295.00 per week.

For further information or to arrange an inspection please Matt Scarce on 8332 1022 or 0411 185 205.

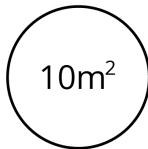
The above information provided has been furnished to us by the vendor/s. We have not verified whether or not that information is accurate and do not have any belief in one way or the other in its accuracy. We do not accept any responsibility to any person for its accuracy and do no more than pass it on. All interested parties should make and rely upon their own inquiries in order to determine whether or not this information is in fact accurate.



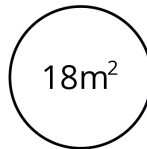
TOTAL



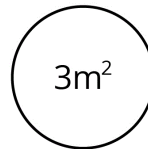
Living



Shed



Carport



Porch

Scale in metres. This drawing is for illustration purposes only. All measurements are approximate and details intended to be relied upon should be independently verified.

Produced by **The Fotobase Group**