



19 Mingara Ave, Stonyfell



Fantastic Family Home with a Stunning Outlook and Huge Allotment of Approx. 1,045sqm.

🚗 4 🏠 1 🚲 2

Beautifully located with wonderful views and leafy surrounds. This spacious solid brick home provides plenty of scope to further improve and suit your own taste.

Price	SOLD
Property Type	Residential
Property ID	1712

Suitable for a larger family, the home offers a formal entrance, 4 good size bedrooms (all with built-in robes), two of those with access to the rear balcony, a generous light filled living room with large picture windows that take full advantage of the view, an open plan family room adjacent an upgraded kitchen with a stainless steel Smeg dishwasher, a 3-way main bathroom, a big separate laundry and separate second toilet. Sliding doors lead from both living area to a spacious, undercover balcony/patio that provides a perfect space for entertaining family and friends.

Agent Details

Matt Scarce - 0411 185 205

Office Details

Tusmore
457 Greenhill Road Tusmore
SA 5065 Australia
08 8332 1488

SCARCE
REAL ESTATE

Other features include split system air-conditioning, ceiling fans, huge underfloor storage and internal access to a double

garage with an auto door.

Outside the home provides a peaceful sanctuary for the whole family with plenty of room in the rear garden for the kids and pets. While the large patio offers an elevated outlook over the garden, through the trees and beyond to the coast. The exceptional size allotment offers enough space for those that want a swimming pool (subject to the necessary consents) or those that simply want a large land holding.

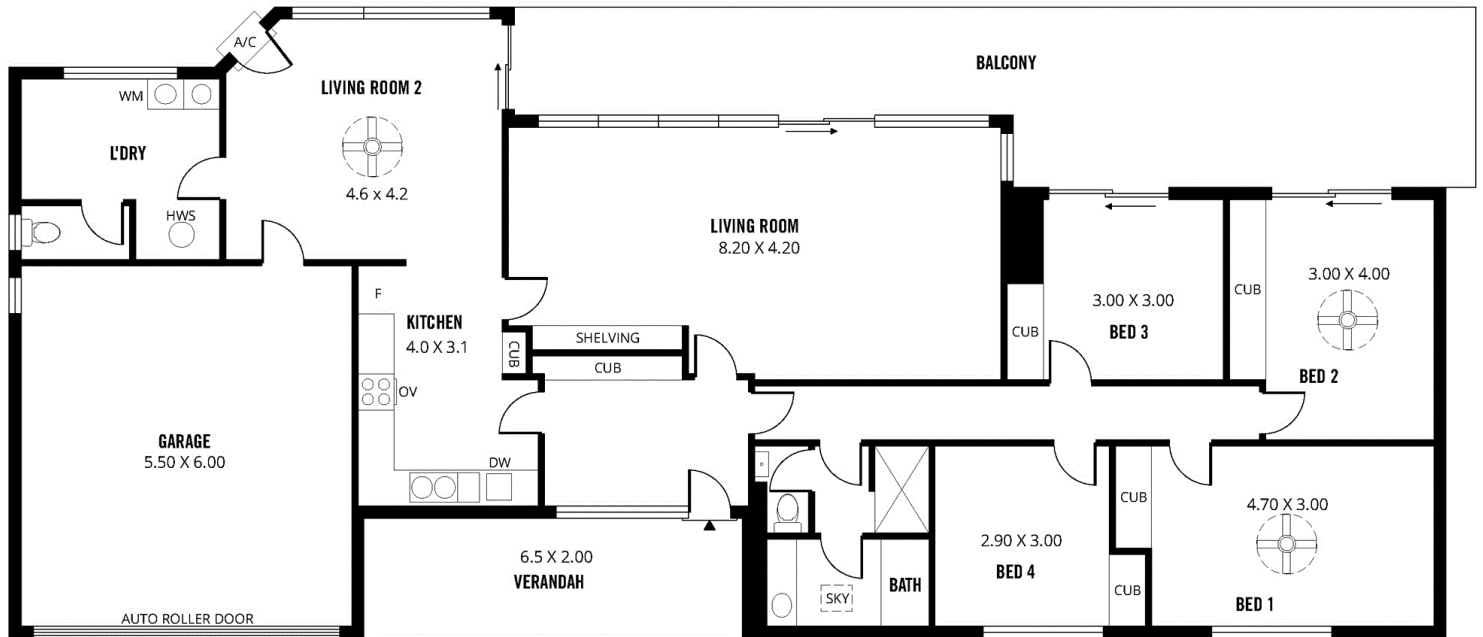
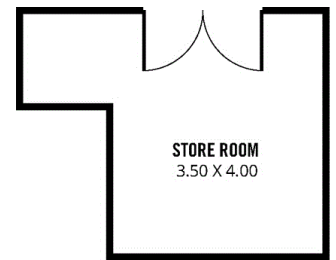
Superbly positioned just a short stroll from Michael Perry Botanic Reserve, the Ferguson Conservation Park, the popular Taylor Blend Café and many sought after schools including Burnside Primary and St Peters Girls.

Auction: Saturday, 11th December 2021 at 11:30am (unless sold prior).

For further information or to arrange an inspection please contact Matt Scarce on 8332 1022 or 0411 185 205.

Please note - some of these images have been virtually furnished.

The above information provided has been furnished to us by the vendor/s. We have not verified whether or not that information is accurate and do not have any belief in one way or the other in its accuracy. We do not accept any responsibility to any person for its accuracy and do no more than pass it on. All interested parties should make and rely upon their own inquiries in order to determine whether or not this information is in fact accurate.



Scale in metres. This drawing is for illustration purposes only. All measurements are approximate and details intended to be relied upon should be independently verified.

Produced by **The Fotobase Group**