

Sold



Unit 3/ 30 Murray St, Clapham



Offers Now Closing This Monday, 28th June at 1:00pm

You'll be impressed with the size, upgrades and location of this one level Colonial style unit situated within in a small group of four just 8kms south of the Adelaide CBD.

Behind the elegant box front window, you'll find a roomy open plan lounge/dining room, a separate renovated kitchen with snowy white cabinetry and a dramatic glossy red splash-back, three well-proportioned bedrooms and a bathroom with a shower over the bath and laundry.

There is a list of desirable features such as a dishwasher, a walk-in pantry and ducted reverse cycle air-conditioning for all-year-round comfort. Large sunny windows and fresh white walls provide a sense of airiness and light, while the character and appeal of the honey toned timber floorboards throughout are also a highlight.

Benefiting from the corner position, the generously proportioned, enclosed courtyard garden runs parallel to both

🚗 3 🚚 1 🚲 1

| | |
|---------------|-------------|
| Price | SOLD |
| Property Type | Residential |
| Property ID | 1676 |

Agent Details

Matt Scarce - 0411 185 205

Office Details

Tusmore
457 Greenhill Road Tusmore
SA 5065 Australia
08 8332 1488

SCARCE
REAL ESTATE

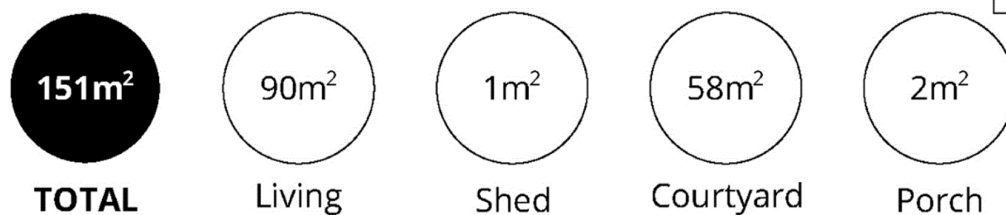
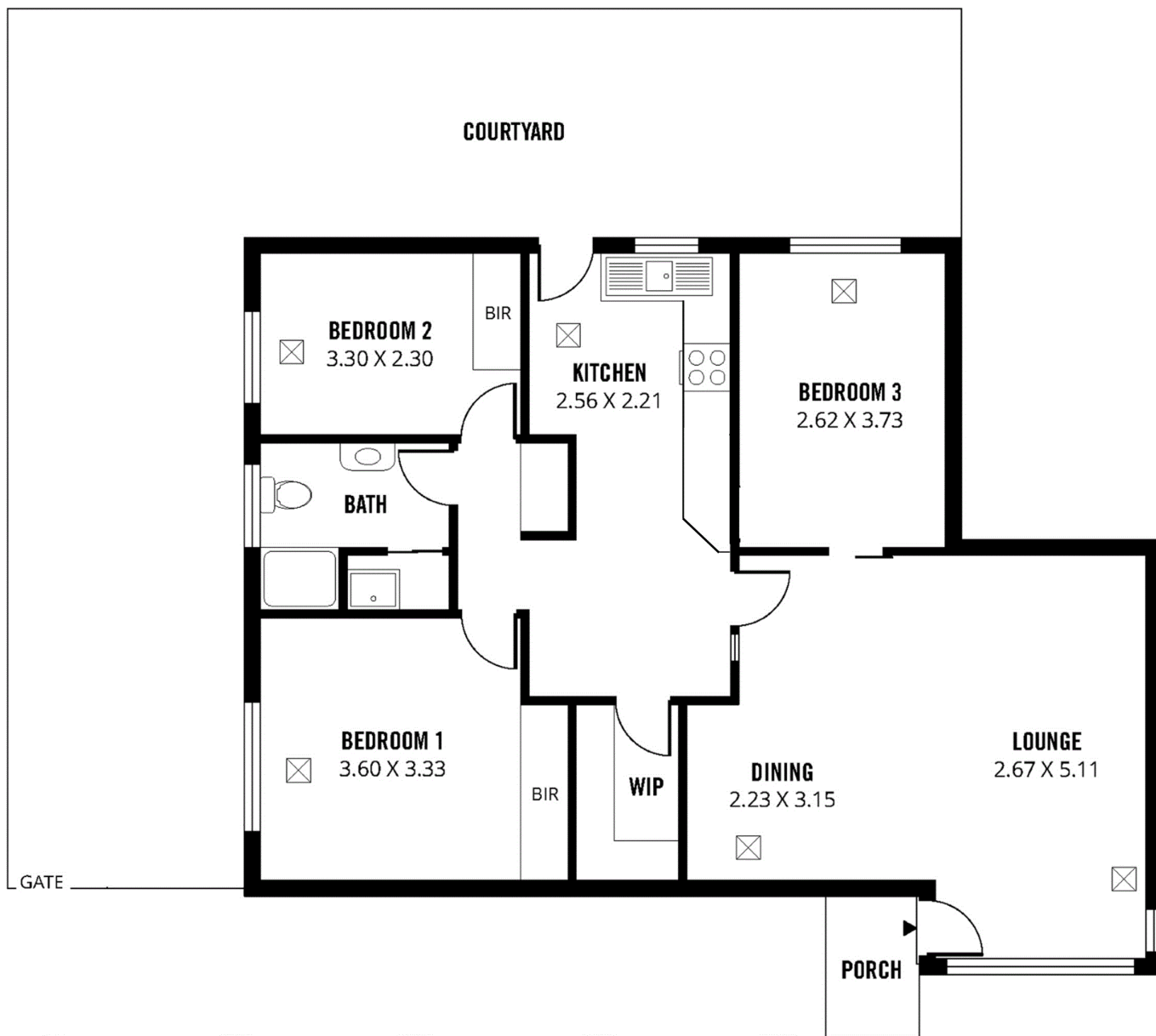
rear sides of the unit, while a designated single carport is conveniently located nearby.

The residential suburb of Clapham is located at the very base of the foothills and is within close proximity to the scenic Brownhill Creek Reserve, popular Scotch College, Clapham Primary School, Mitcham Shopping Square and cinemas. There is plenty of Public Transport to and from this location with access to buses, or trains from the Torrens Railway Station.

Offers Now Closing this Monday, 28th June at 1:00pm.

For further information or to arrange an inspection please contact Matt Scarce on 8332 1022 or 0411 185 205.

The above information provided has been furnished to us by the vendor/s. We have not verified whether or not that information is accurate and do not have any belief in one way or the other in its accuracy. We do not accept any responsibility to any person for its accuracy and do no more than pass it on. All interested parties should make and rely upon their own inquiries in order to determine whether or not this information is in fact accurate.



Scale in metres. This drawing is for illustration purposes only. All measurements are approximate and details intended to be relied upon should be independently verified. Produced by **The Fotobase Group**