

Sold



2, 3 Mulberry Ct, Magill



Offers Now Closing Wednesday 16/6 @ 5:00pm

Immaculately presented, this low maintenance courtyard style home provides an outstanding opportunity for both first home buyers and investors looking to buy in this popular eastern suburb.

Adjacent a reserve, this superbly located property comprises of 2 bedrooms (both with built-in robes), a generous size living room which overlooks the front lawn, an open plan kitchen/dining room that leads to the outdoor entertaining area, an attractive bathroom with full bath and a good size separate laundry. Other features include split system air-conditioning and ceiling fans.

Outside the fully enclosed rear courtyard offers an incredible amount of outdoor space with a large lawn area surrounded by attractive gardens. There's excellent parking with a garage that has rear access through to the backyard and additional parking in the driveway.

 2  1  1

Price	SOLD
Property Type	Residential
Property ID	1672

Agent Details

Matt Scarce - 0411 185 205

Office Details

Tusmore
457 Greenhill Road Tusmore
SA 5065 Australia
08 8332 1488

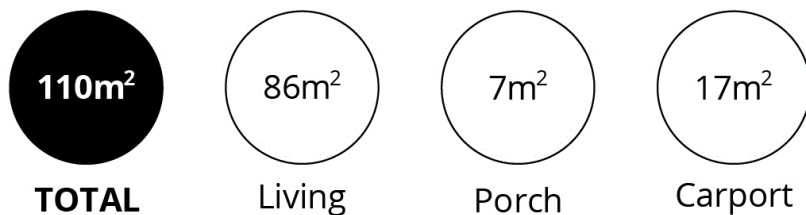
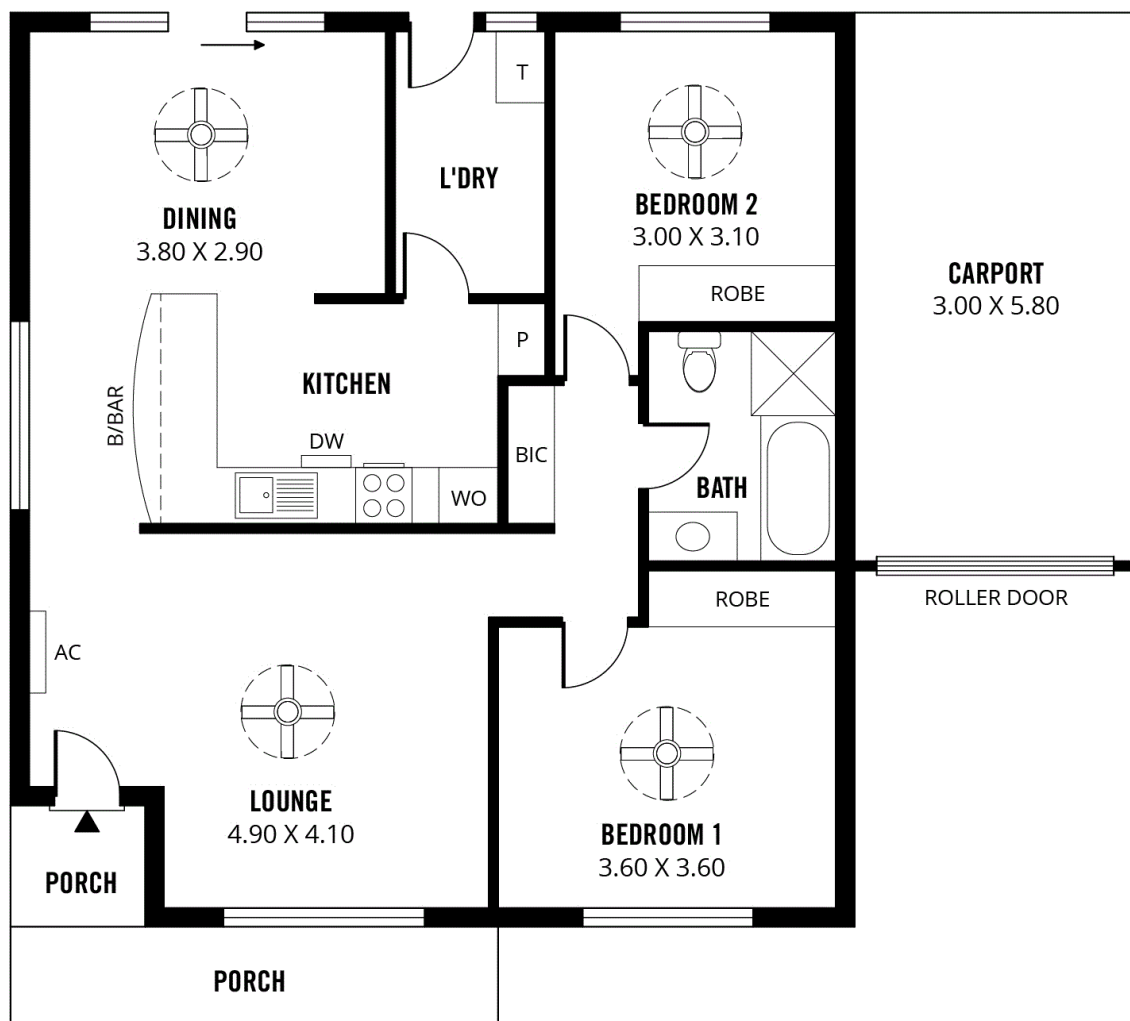
SCARCE
REAL ESTATE

Situated within close proximity to popular restaurants, local shops, sought after schools including Norwood Morialta High School, Rostrevor College and the Uni SA Magill Campus, together with excellent public transport this is one you won't want to miss!

Offers now close Wednesday, 16th of June 2021 at 5pm.

For further information or to arrange an inspection please contact Matt Scarce on 8332 1022 or 0411 185 205.

The above information provided has been furnished to us by the vendor/s. We have not verified whether or not that information is accurate and do not have any belief in one way or the other in its accuracy. We do not accept any responsibility to any person for its accuracy and do no more than pass it on. All interested parties should make and rely upon their own inquiries in order to determine whether or not this information is in fact accurate.



Scale in metres. This drawing is for illustration purposes only. All measurements are approximate and details intended to be relied upon should be independently verified.

Produced by **The Fotobase Group**