

Sold



Unit 4, 4 West Tce, Kensington Gardens



Offers Now Closing Tuesday, 6/4/21 at 5:00pm

Ready to move straight into, this immaculate, single storey unit is perfect for home buyers and investors looking for an affordable property in the desirable eastern suburbs.

Situated in a small, appealing group of 5 just a short stroll from the popular Kensington Gardens Reserve and minutes from the Magill Road cafes and shops. The unit comprises of spacious open plan living with stunning polished floorboards and an adjacent kitchen, two bedrooms, both with built in robes including a large master bedroom which could also accommodate a study desk, an attractive bathroom with full bath and shower and a separate laundry. Other features include split system air-conditioning and a good size store room.

Outside there is a large carport under the main roof with access through to a private rear courtyard with a shaded pergola area for enjoying alfresco entertaining family and friends.

🚗 2 🚚 1 🚲 1

Price	SOLD
Property Type	Residential
Property ID	1653

Agent Details

Matt Scarce - 0411 185 205

Office Details

Tusmore
457 Greenhill Road Tusmore
SA 5065 Australia
08 8332 1488

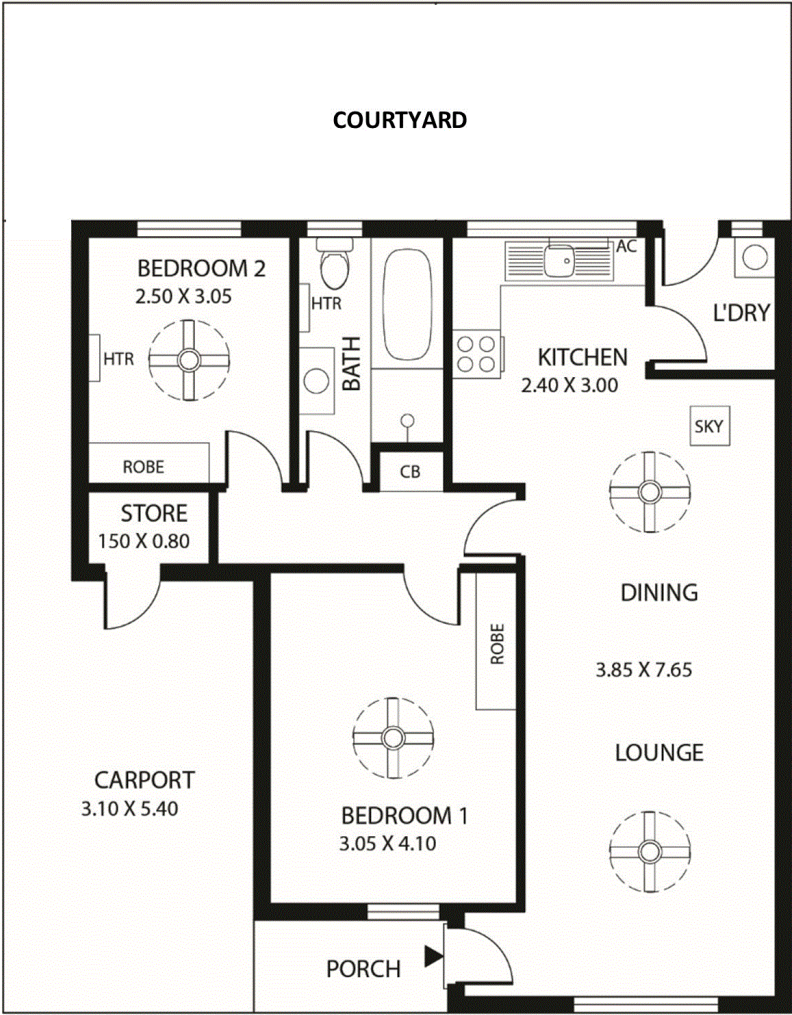
SCARCE
REAL ESTATE

Close to sought after Norwood Morialta High School with many fantastic local facilities at your fingertips, this is a great opportunity to buy into one of Adelaide's top suburbs.

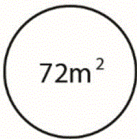
Offers Now Close Tuesday, 6th April 2021 at 5pm.

For further information or to arrange an inspection please contact Matt Scarce on 8332 1022 or 0411 185 205.

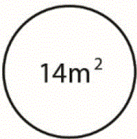
The above information provided has been furnished to us by the vendor/s. We have not verified whether or not that information is accurate and do not have any belief in one way or the other in its accuracy. We do not accept any responsibility to any person for its accuracy and do no more than pass it on. All interested parties should make and rely upon their own inquiries in order to determine whether or not this information is in fact accurate.



TOTAL



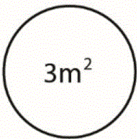
Living



Courtyard



Carport



Porch

Scale in metres. This drawing is for illustration purposes only. All measurements are approximate and details intended to be relied upon should be independently verified.