

Sold

51 River St, Marden



Offers Now Closing This Thursday, 25/3 @ 5:00pm

3 2 1

The clever inner design elements carefully chosen by the current owner sets this more than practical two-storey home apart from all the others. Combined with the near to Linear Park Trail location and close proximity to other outstanding local facilities, this property is hard to pass-by.

Price	SOLD
Property Type	Residential
Property ID	1647

Agent Details

Matt Scarce - 0411 185 205

Office Details

Tusmore
457 Greenhill Road Tusmore
SA 5065 Australia
08 8332 1488

A striking, yet subtle balance has been created using a combination of soft and strong colour themes from a charcoal and chalky white palette. Finished to a high level with an abundance of features including: a timber floating floor tinged with a light tobacco accent adding urban rusticity, quality 100% woollen carpets, recessed display areas and niches to exhibit your favourite works of art, concrete and drum pendant light fittings that create a sense of drama and penny round tiles and stretch mosaics that combine with black and chrome mixer tap-wear.

While the interior finishes are appealing, the floor plan of this

SCARCE
REAL ESTATE

2015 built home does not disappoint. You'll find a generous open plan living/dining room overlooked by the kitchen and servery, while large picture windows in this room allow plenty of ventilation and natural light together with a good view of the undercover paved entertaining area.

The master suite with an en-suite and walk-in robe together with two other bedrooms (both with built-in robes) and the main bathroom are on the upper level. You'll be in awe of the light and airiness generated by an enormous front feature window as you head upstairs and enjoy the scenic outlook of the Adelaide Hills from wide windows positioned in the front bedroom.

A single garage with an auto roller door has internal access into the home, while there's room to park an additional car off-street in the driveway. Attractive landscaped gardens with auto watered garden beds frame the front and rear of the property.

Close to many popular facilities such as Willow Bend Reserve and tennis courts, the Marden Shopping Centre, the Klemzig Interchange, Vale Park Primary School and Marden Senior College, this is your opportunity to purchase a simply stunning home some 5km's from the CBD.

All in all the property delivers a low maintenance or lock 'n' leave lifestyle that would suit a small family or singles and couples that like to entertain.

Offers now closing this Thursday, 25/3 at 5:00pm - final open inspection this Wednesday, 24/3 @ 5:30pm - 6:00pm

For further information or to arrange an inspection please contact Matt Scarce on 8332 1022 or 0411 185 205.

Other features include:

Smeg Stainless steel appliances including a dishwasher

Essastone kitchen bench-tops

Samsung ducted reverse cycle air-conditioning with upper and lower level controls

NBN connected

Front security screen and deadlocks

Quality Stegbar windows with key locks

A security alarm

Block-out roller blinds in all three bedrooms and sunscreen roller blinds in other rooms

Semi-frameless shower screens

Rainfall shower heads

LED stair lights

En-suite and walk-in robe in the master bedroom

Built-in robes in bedrooms 2 and 3

A luxurious full bath (main bathroom)

Four panelled behind-the-mirror storage in the en-suite

A convenient ground level lavatory (one of three)

Plenty of built-in laundry space with room for an under-bench washing machine and with under-the-stair storage adjacent

Upper level linen press

Ceilings up-to 2.7m in height

Garage with remote control auto roller door and handy internal access

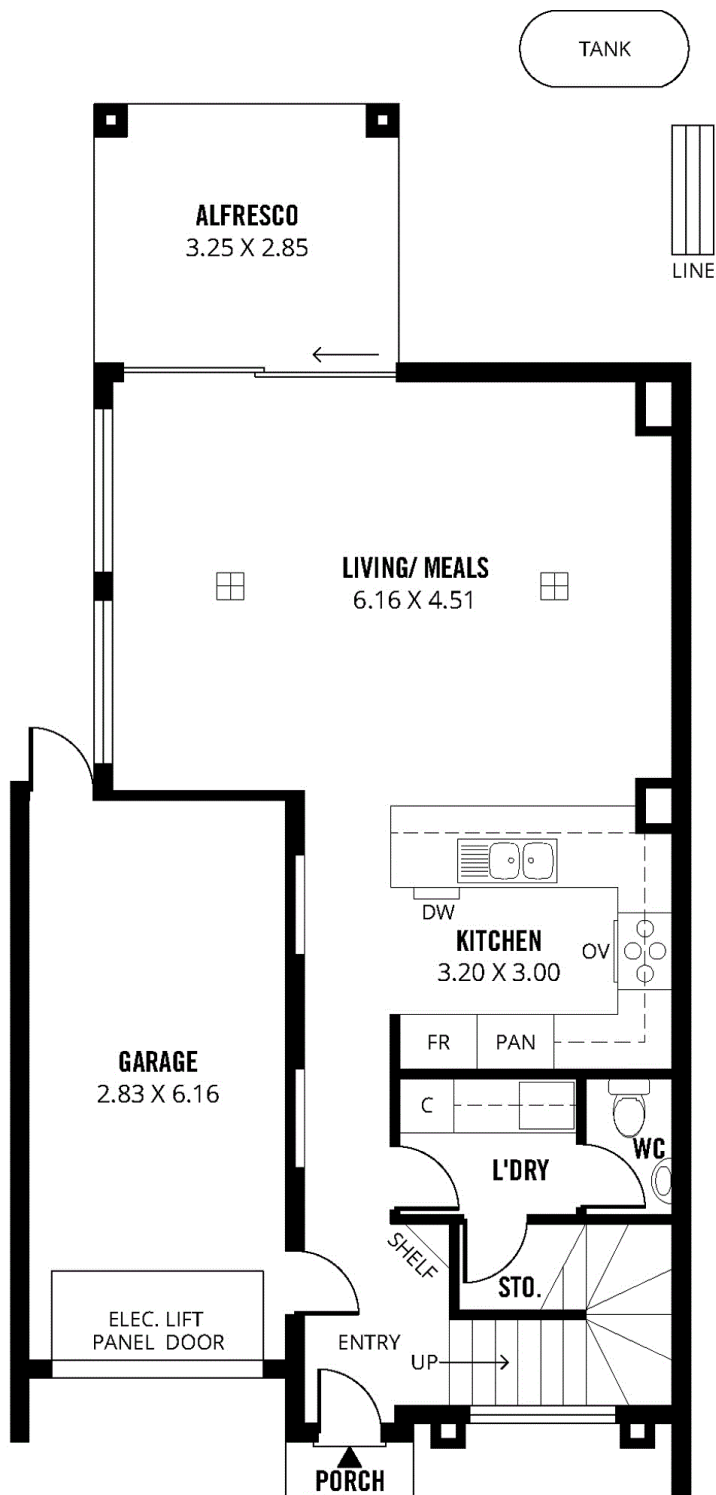
Rear doorway providing access through the garage into the back garden

Front and rear garden beds with an auto watering system

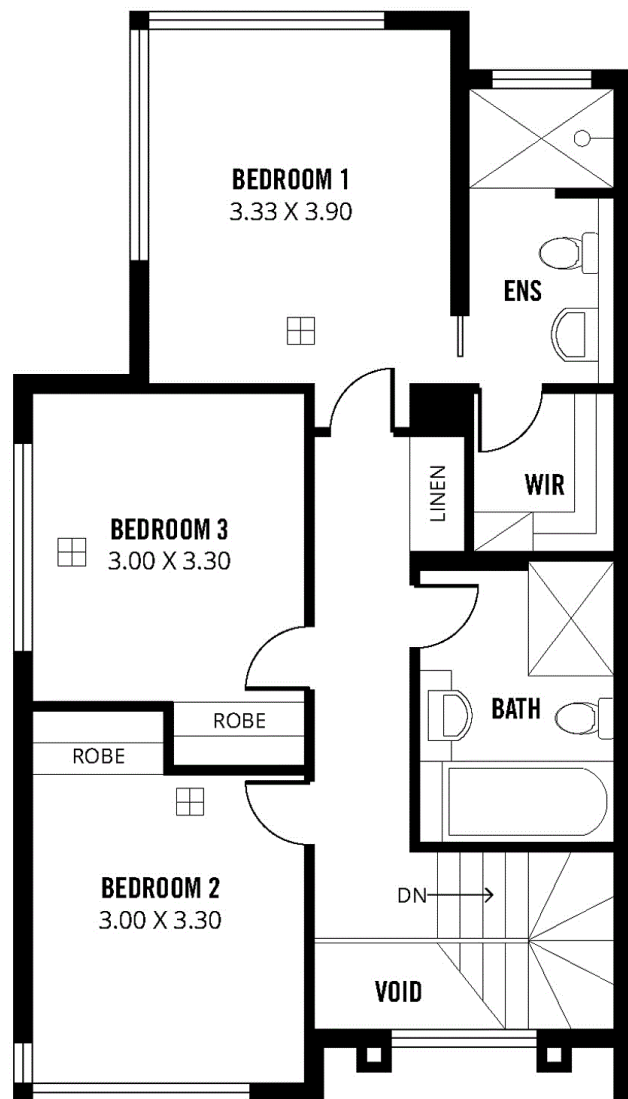
Fully fenced easy care rear garden

Rear all-weather alfresco entertaining patio accessed through a sliding door and the rear lounge/family room

The above information provided has been furnished to us by the vendor/s. We have not verified whether or not that information is accurate and do not have any belief in one way or the other in its accuracy. We do not accept any responsibility to any person for its accuracy and do no more than pass it on. All interested parties should make and rely upon their own inquiries in order to determine whether or not this information is in fact accurate.



GROUND FLOOR



UPPER FLOOR



Scale in metres. This drawing is for illustration purposes only. All measurements are approximate and details intended to be relied upon should be independently verified.

Produced by **The Fotobase Group**