

Leased



Unit 12, 463A Portrush Rd, Glenside



#### WALK TO THE VILLAGE

Just a short stroll from the Burnside Village, this bright and airy apartment offers a cosmopolitan lifestyle close to fantastic cafes, shopping and fashion.

Providing an affordable opportunity to buy into this desirable eastern suburb, this secure, upstairs unit comprises of a good size main bedroom with mirrored built-in robes, a study or potential 2<sup>nd</sup> bedroom for a young child, an open plan living room adjacent to an upgraded kitchen with gas cooking, an updated bathroom with laundry facilities and an undercover carport. Other features include a brand new split system air-conditioner and use of a large balcony space.

Situated within the Glenunga International High School zones and with an abundance of Public Transport nearby.

**\*\* No Pets \*\***

As a potential tenant please send through an online enquiry

🚗 2 🚲 1 🚶 1

Price \$275 per week

Property Type Rental

Property ID 1628

#### Agent Details

#### Office Details

Tusmore

457 Greenhill Road Tusmore

SA 5065 Australia

08 8332 1488

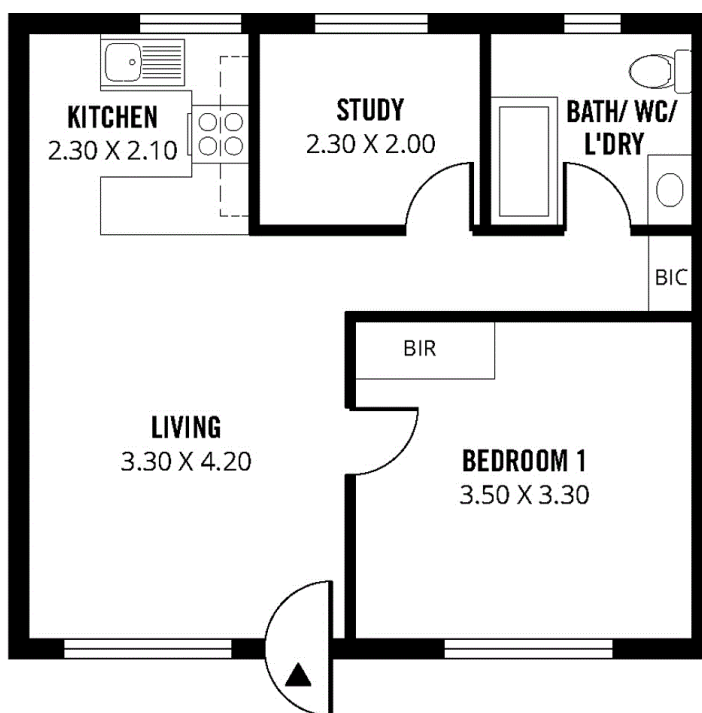
**SCARCE**  
REAL ESTATE

with your correct email address and contact number. We will send you an email when an open inspection has been scheduled, we will also send you an application should you wish to bring this with you at the open.

Thank you for your patience during this time.

**\*\*Please make sure to check your spam/junk mail box for our emails\*\***

The above information provided has been furnished to us by the vendor/s. We have not verified whether or not that information is accurate and do not have any belief in one way or the other in its accuracy. We do not accept any responsibility to any person for its accuracy and do no more than pass it on. All interested parties should make and rely upon their own inquiries in order to determine whether or not this information is in fact accurate.



**52m<sup>2</sup>**

**TOTAL**



**52m<sup>2</sup>**

**Living**

Scale in metres. This drawing is for illustration purposes only. All measurements are approximate and details intended to be relied upon should be independently verified.

**Produced by The Fotobase Group**