

Sold



3A Undelcarra Rd, Burnside



Superbly Positioned Just a Short Stroll from Newland Reserve

A rare opportunity to buy in one of the best streets, in one of the best eastern suburbs, at an affordable price.

A two storey Torrens Title home with spacious living areas, large windows that allow plenty of natural light and with potential to upgrade with your own special style if you so desire.

The ground level comprises of a bay windowed lounge room with floating floors, a formal dining room, a rear open plan family room with a casual meals area seamlessly integrating with the outdoor entertaining space, a separate kitchen with easy access to both dining areas, a second lavatory and separate laundry that can also be reached via the secure carport.

On the upper level you will find three bedrooms with a built-in robe in bedroom one and a walk-in robe in bedroom three, together with a large main bathroom with a full bath and shower.

3 1 2

Price	SOLD
Property Type	Residential
Property ID	1607

Agent Details

Matt Scarce - 0411 185 205

Office Details

Tusmore
457 Greenhill Road Tusmore
SA 5065 Australia
08 8332 1488

SCARCE
REAL ESTATE

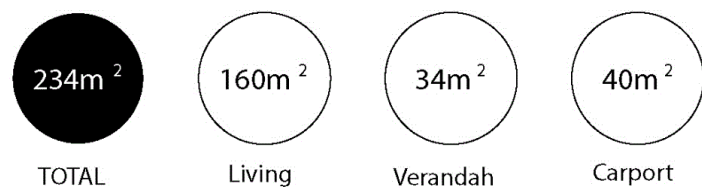
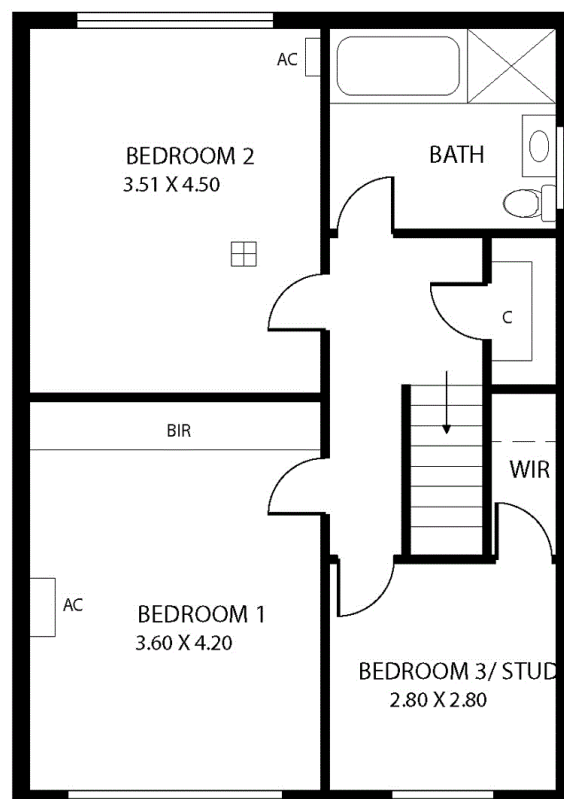
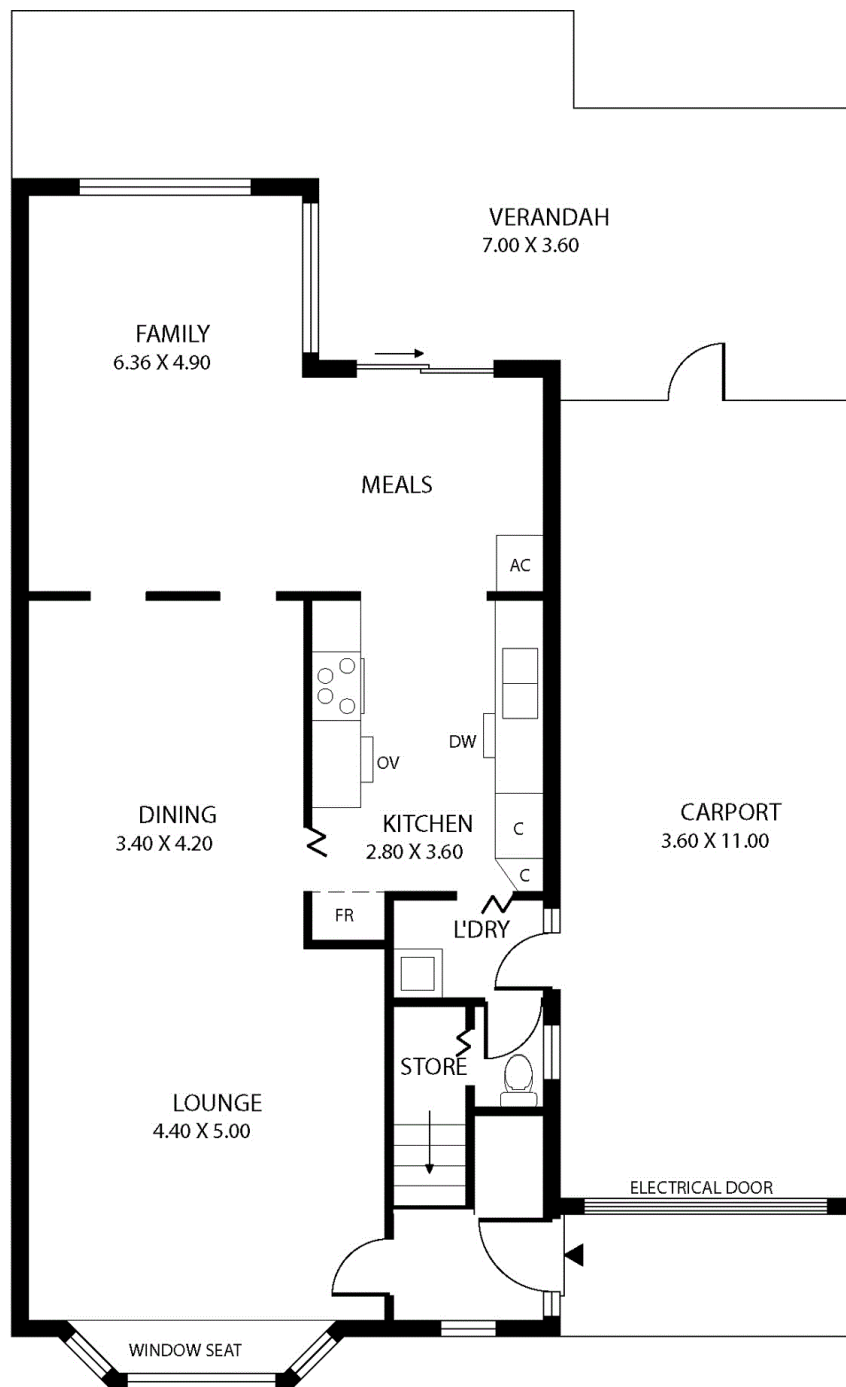
On the outside the carport with an auto roller door has room for two vehicles, while there is additional off-street parking available in the driveway. The good size rear garden is fully enclosed, north facing and is overlooked by a generous paved veranda ideal for alfresco entertaining.

Other features include split system air-conditioning, a dishwasher and plenty of storage space.

A prestigious location near to outstanding facilities such as sought-after schools, popular cafes and picturesque reserves.

For further information or to arrange an inspection please contact Matt Scarce on (08) 8332 1022 or 0411 185 205.

The above information provided has been furnished to us by the vendor/s. We have not verified whether or not that information is accurate and do not have any belief in one way or the other in its accuracy. We do not accept any responsibility to any person for its accuracy and do no more than pass it on. All interested parties should make and rely upon their own inquiries in order to determine whether or not this information is in fact accurate.



Scale in metres. This drawing is for illustration purposes only. All measurements are approximate and details intended to be relied upon should be independently verified.

Produced by **The Fotobase Group**