

Sold



5, 20 Orient Rd, Kensington Gardens



**Under Instructions from Australian Executor Trustees Limited**

Open Inspection on 12th December has been cancelled.

This light and airy single storey unit is sure to impress having gone under a complete renovation approximately four years ago.

Among a small group of 6 units and comprising of two well-proportioned bedrooms, a separate roomy lounge, a large up-graded kitchen, a smart renovated bathroom and separate laundry, a carport with an auto roller door (room to park 2 cars - one undercover) and a large, very low maintenance rear courtyard.

There's plenty of pleasing style with classic Queensland Maple hardwood floors and a crisp white interior, mirrored built-in robes, floor-to-ceiling herringbone and subway bathroom tiles, a frame-less shower screen and stainless steel kitchen appliances.

 2  1  1

Price	SOLD
Property Type	Residential
Property ID	1606

### Agent Details

Matt Scarce - 0411 185 205

### Office Details

Tusmore  
457 Greenhill Road Tusmore  
SA 5065 Australia  
08 8332 1488

**SCARCE**  
REAL ESTATE

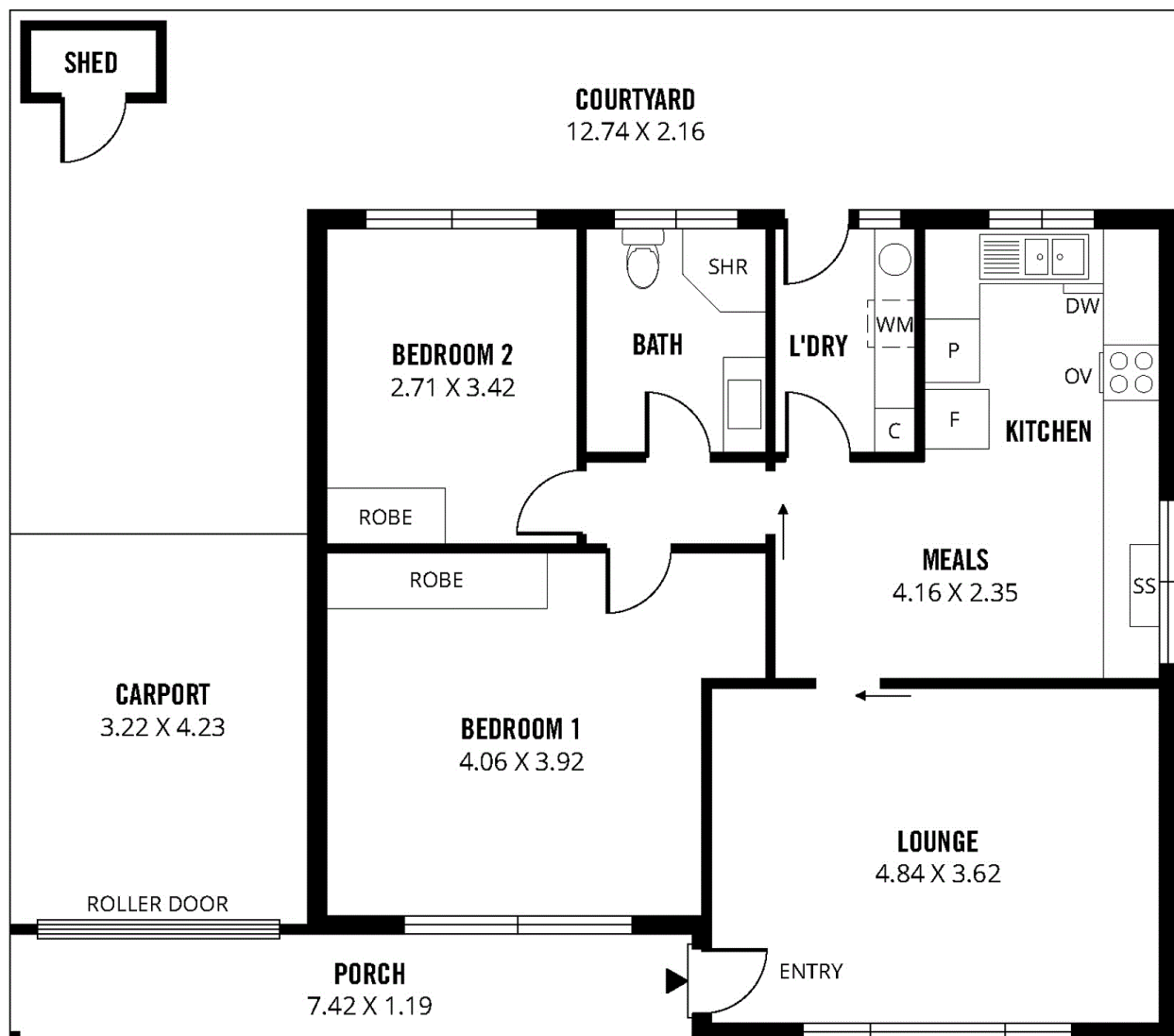
Among the many features and benefits you will find a split system air-conditioner, a dishwasher, a DeLonghi gas cooker, a kitchen power point with USB capability and a handy rear garden shed.

Nestled within a very desirable location with access to plenty of Public Transport, local picturesque parks and reserves and with a convenient Aldi Supermarket nearby. Within walking distance to the University of SA Magill and Norwood Morialta High School Senior Campuses, approximately 3kms from the cosmopolitan shops and cafes of the Norwood Parade and an easy 5km commute into the Adelaide CBD.

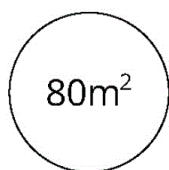
Don't miss the opportunity to make this very affordable property, within one of Adelaide's most salubrious suburbs, your very own.

For further information or to arrange an inspection please contact Matt Scarce on 8332 1022 or 0411 185 205.

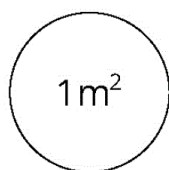
The above information provided has been furnished to us by the vendor/s. We have not verified whether or not that information is accurate and do not have any belief in one way or the other in its accuracy. We do not accept any responsibility to any person for its accuracy and do no more than pass it on. All interested parties should make and rely upon their own inquiries in order to determine whether or not this information is in fact accurate.



**TOTAL**



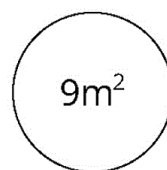
Living



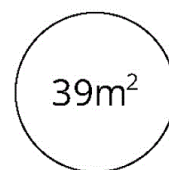
Shed



Carport



Porch



Courtyard

Scale in metres. This drawing is for illustration purposes only. All measurements are approximate and details intended to be relied upon should be independently verified.

Produced by **The Fotobase Group**