

Sold



Unit 10, 88 Tusmore Ave, Tusmore



Ground Level Unit - Beautifully Renovated Throughout with a Large private Courtyard

🚗 2 🚿 1 🚲 1

With all the hard work done this is a great addition to any investment portfolio or simply move-in and enjoy the lifestyle benefits this property provides.

Price	SOLD
Property Type	Residential
Property ID	1605

Immaculately presented within close proximity to outstanding facilities such as the George Bolton Swimming Centre, picturesque parks and reserves, cosmopolitan food and fashion shopping at the Burnside Village, great coffee at local cafe Rustic Gourmet and with easy access to the CBD via Public Transport.

Agent Details

Matt Scarce - 0411 185 205

Well positioned at the rear of the group, this ground floor apartment not only packs some punch in terms of location but also provides a host of features. Two very good size bedrooms (the master bedroom featuring a built-in robe), a generously proportioned living room with modern split system air-conditioning and attractive polished floor boards, a recently

Office Details

Tusmore
457 Greenhill Road Tusmore
SA 5065 Australia
08 8332 1488

SCARCE
REAL ESTATE

upgraded kitchen adjacent to the dining area has stainless steel appliances and a dishwasher. The stylish bathroom has been recently renovated as has the separate laundry.

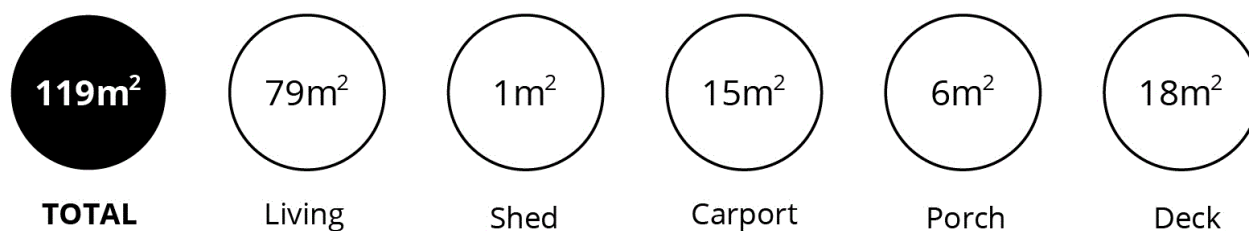
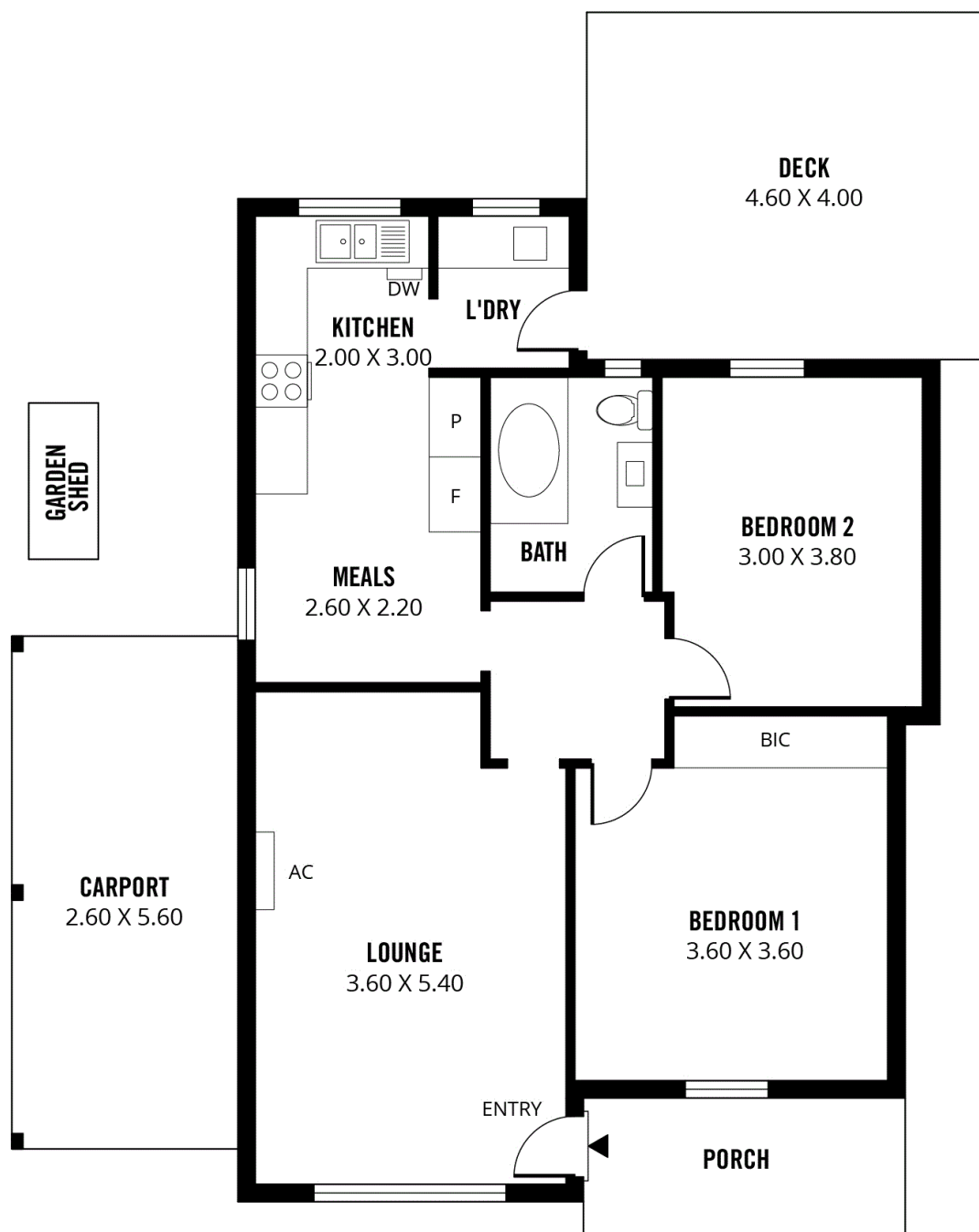
Outside there is a large fully enclosed courtyard with a spacious timber deck perfect for outdoor entertaining. The designated carport is located right alongside the unit and there is further space for a second vehicle.

Ready to move straight into and enjoy, this is your opportunity to establish yourself within one of Adelaide's most prestigious tree-lined suburbs at a very affordable price.

Offers close Tuesday, 8th December 2020 at 5pm (unless sold prior).

For further information or to arrange an inspection please contact Matt Scarce on 8332 1022 or 0411 185 205.

The above information provided has been furnished to us by the vendor/s. We have not verified whether or not that information is accurate and do not have any belief in one way or the other in its accuracy. We do not accept any responsibility to any person for its accuracy and do no more than pass it on. All interested parties should make and rely upon their own inquiries in order to determine whether or not this information is in fact accurate.



Scale in metres. This drawing is for illustration purposes only. All measurements are approximate and details intended to be relied upon should be independently verified. Produced by **The Fotobase Group**