

Sold

WAKEFIELD STREET

LITTLE ANGAS STREET



LOT 297 Wakefield Street, Kent Town



Outstanding Investment Opportunity on the City Fringe

Superbly located on a large allotment of approximately 969sqm with valuable frontage to both Wakefield and Little Angas Streets, this group of units is just a short stroll through the East Parklands to the CBD.

A total of 9 units comprising of 8 two bedroom units and 1 one bedroom unit, the majority with recent upgrades to kitchens, bathrooms and flooring, each with either a split system or ducted reverse cycle air-conditioning. All with allocated parking, 7 of which are undercover and with auto roller doors.

All 9 units are currently leased with an approximate total rental of \$130,000 per annum making this an ideal addition to your property portfolio.

Positioned within such close proximity to the City as well as the ever popular Norwood Parade, this is a rare and exciting chance to secure your future nest egg within a highly sought after suburb.

17 9 10 969 m2

Price	SOLD
Property Type	Residential
Property ID	1535
Land Area	969 m2

Agent Details

Matt Scarce - 0411 185 205
Matt Scarce - 0411 185 205

Office Details

Tusmore
457 Greenhill Road Tusmore
SA 5065 Australia
08 8332 1488

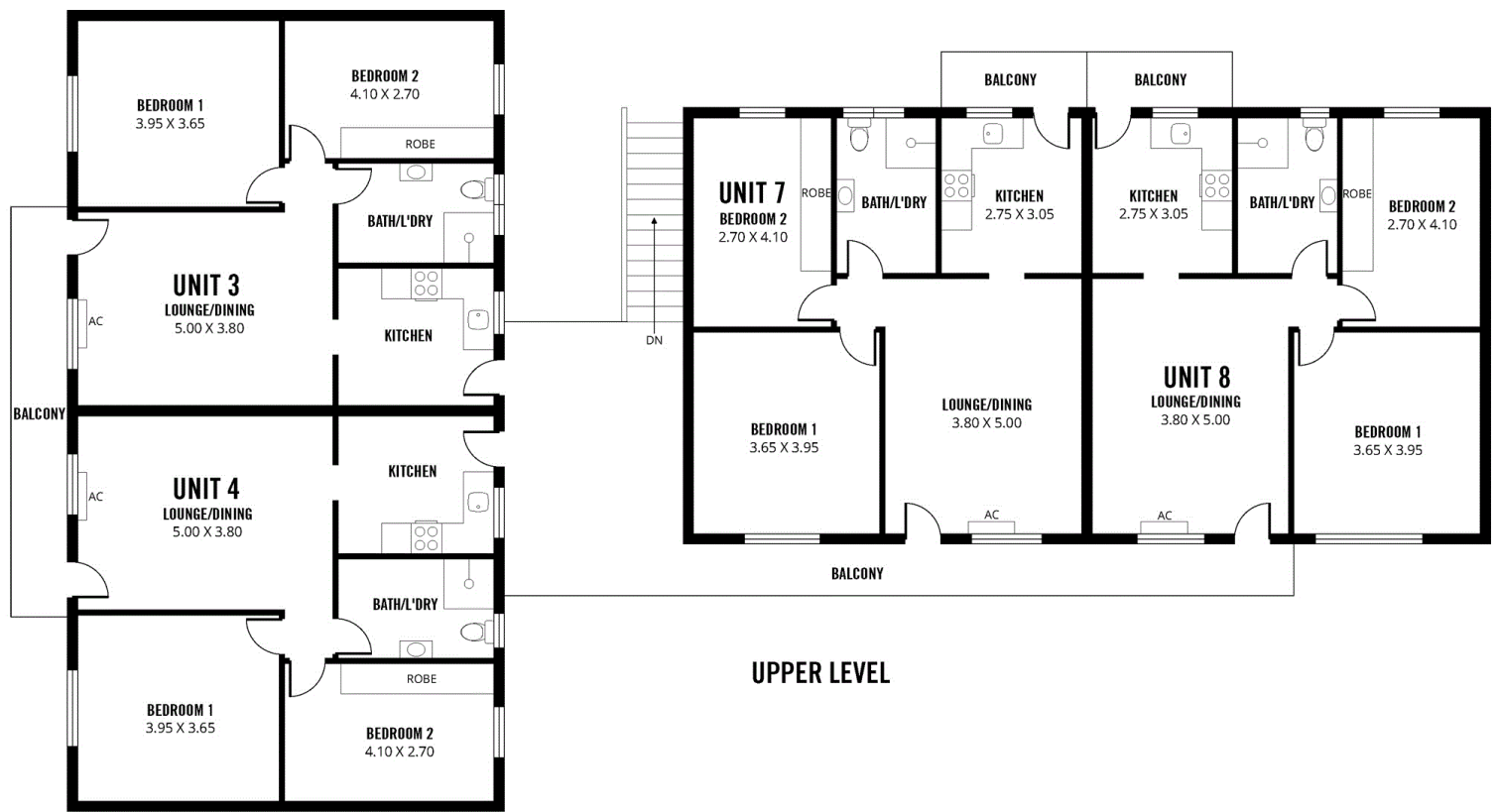
SCARCE
REAL ESTATE

Offers close Tuesday, 18th February 2020 at 5pm.

For further information or to arrange an inspection please contact Matt Scarce on 0411 185 205 or Carlos Carosi on 0402 561 416.

The above information provided has been furnished to us by the vendor/s. We have not verified whether or not that information is accurate and do not have any belief in one way or the other in its accuracy. We do not accept any responsibility to any person for its accuracy and do no more than pass it on. All interested parties should make and rely upon their own inquiries in order to determine whether or not this information is in fact accurate.





UPPER LEVEL

Scale in metres. This drawing is for illustration purposes only. All measurements are approximate and details intended to be relied upon should be independently verified.

Produced by **The Fotobase Group**