

Sold

Unit 8, 2 Alison St, Glenelg North



Spacious Apartment Just Minutes from the Beach!

Contact us to inspect by appointment

Imagine . . . long lazy days spent at Glenelg Beach or a leisurely lunch on the Marina. Enjoy an easy care lock 'n' leave lifestyle with no gardening to do or lawns to mow just a few streets away from Adelaide's favourite beachside Tourist destination.

A secure 1st floor apartment superbly located overlooking Parkinson Reserve and close to outstanding facilities such as Bayside Village Shopping Centre, the Jetty, the abundance of shops and cosmopolitan cafes on Jetty Road together with many other popular attractions.

Comprising of 2 very good size bedrooms with built-in robes, a generous open plan living room leading to a large private balcony, an adjacent kitchen with gas cooking, an attractive bathroom and separate laundry.

Ideal for 1st home buyers or investors seeking an affordable

 2  1

Price	SOLD
Property Type	Residential
Property ID	1502

Agent Details

Matt Scarce - 0411 185 205

Office Details

Tusmore
457 Greenhill Road Tusmore
SA 5065 Australia
08 8332 1488

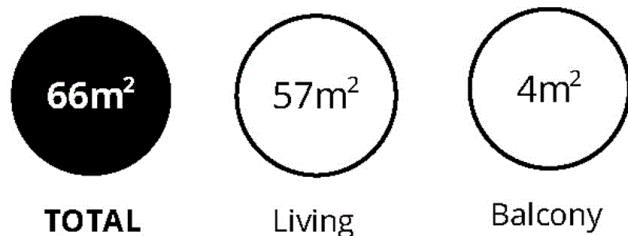
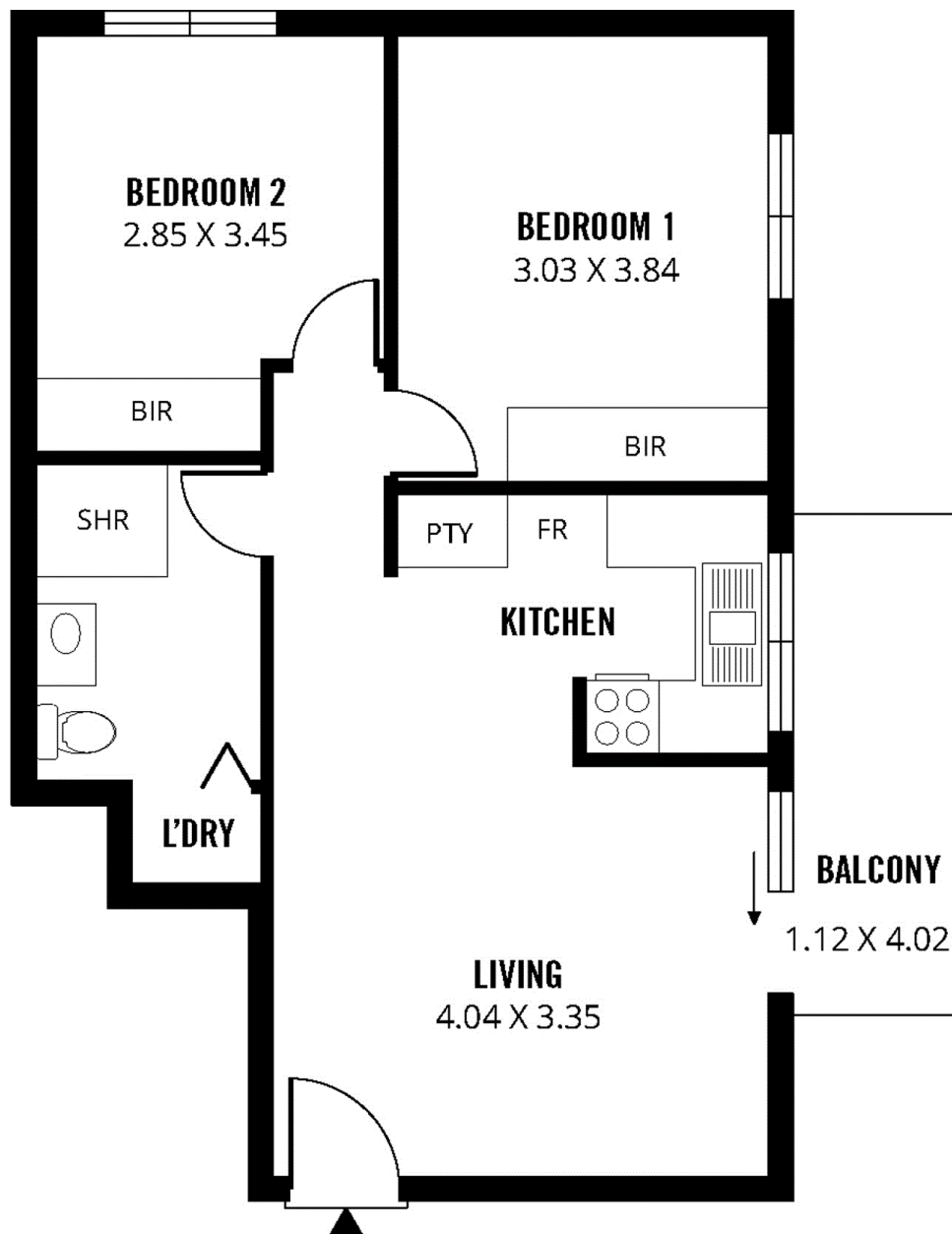
SCARCE
REAL ESTATE

near to beach investment. A fantastic opportunity to purchase in this desirable coastal suburb.

*In-line with Public Health and social distancing requirements our inspections are now all by private appointment. All buyers will need to contact us to register and qualify before attending and there will be a check list for all buyers before entering. Using tools such as Face Time and Whats App we can also offer you the alternative option of a live tour and answer your questions in real time. With interest rates at all-time lows the market is still very active so we look forward to the opportunity to assist you any way we can.

For further information or to arrange an inspection please contact Matt Scarce on 0411 185 205.

The above information provided has been furnished to us by the vendor/s. We have not verified whether or not that information is accurate and do not have any belief in one way or the other in its accuracy. We do not accept any responsibility to any person for its accuracy and do no more than pass it on. All interested parties should make and rely upon their own inquiries in order to determine whether or not this information is in fact accurate.



Scale in metres. This drawing is for illustration purposes only. All measurements are approximate and details intended to be relied upon should be independently verified.

Produced by The Fotobase Group