

Sold



Lot 5 Anglesey Avenue, St Georges



#### Desirable Approx. 656sqm Corner Block & Charming Cottage

#### "Anglesey Cottage"

Superbly positioned on the corner of Woodcroft Avenue this appealing character home provides an outstanding opportunity for a young family to purchase in this highly sought after eastern suburb at an entry level price. Situated on approximately 656 square metres this is also a fantastic allotment for those looking to build subject to consent.

Offering a flexible floor plan, the home comprises of a formal entry, 2 to 3 bedrooms plus a study (depending on your requirements), a formal lounge and dining room with a feature fireplace, a good size family room with French doors leading to an excellent outdoor entertaining area, a large solid timber kitchen with a stainless steel Bosch dishwasher, a heritage style bathroom with full bath, a separate laundry space and more. Other features include polished floor boards, plenty of built-in cupboards and ducted reverse cycle air-conditioning.

🚗 1 📏 656 m2

|               |             |
|---------------|-------------|
| Price         | SOLD        |
| Property Type | Residential |
| Property ID   | 1501        |
| Land Area     | 656 m2      |

#### Agent Details

Matt Scarce - 0411 185 205  
Matt Scarce - 0411 185 205

#### Office Details

Tusmore  
457 Greenhill Road Tusmore  
SA 5065 Australia  
08 8332 1488

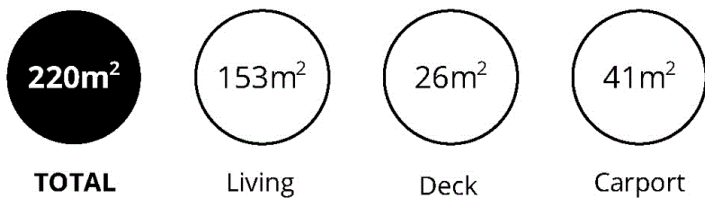
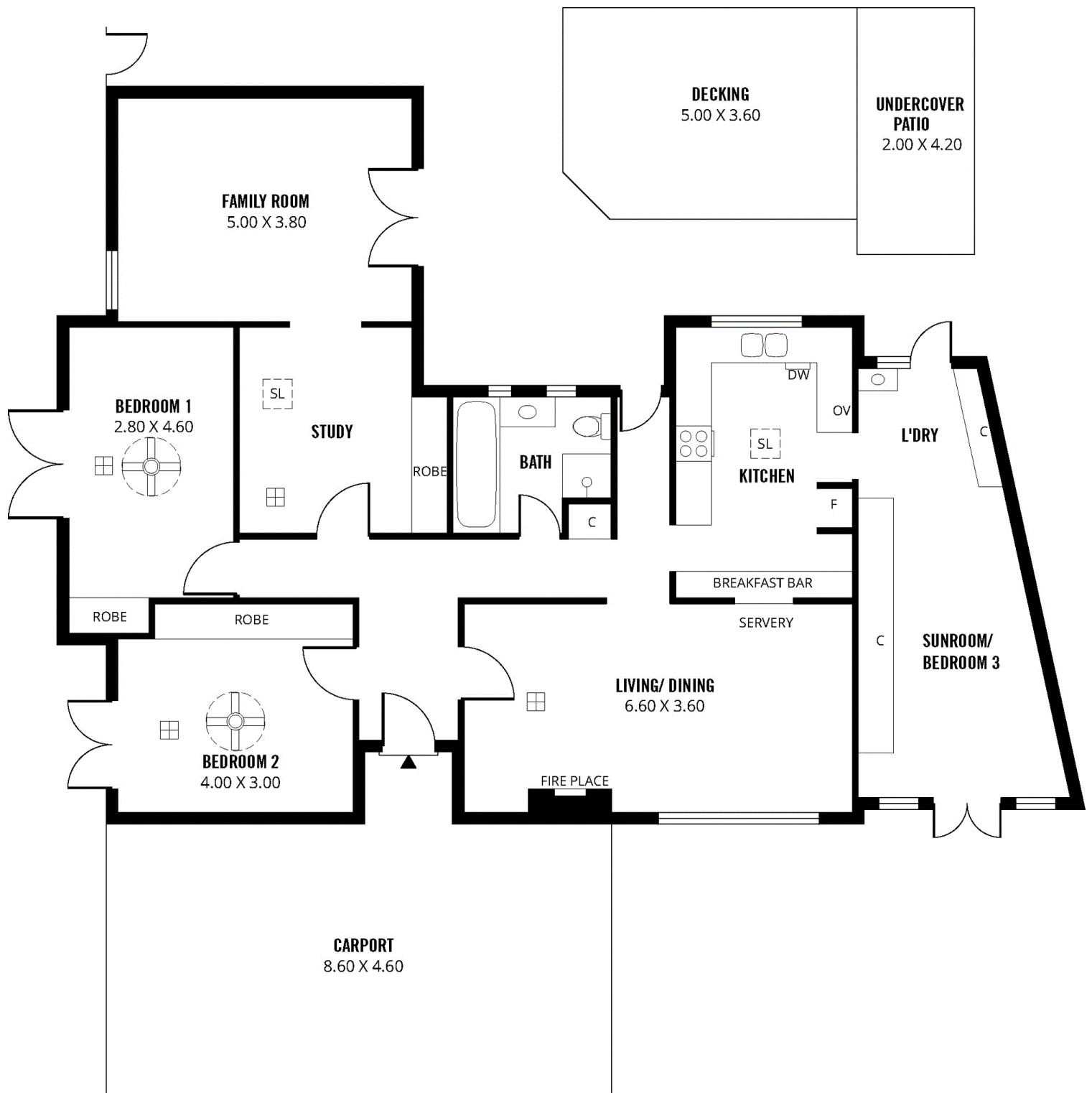
**SCARCE**  
REAL ESTATE

On the outside you will find an attractive lawn and garden at the front and a rear patio/BBQ area where a timber deck seamlessly integrates the family room with the alfresco entertaining space.

Located within the Glenunga International High and Linden Park Primary School zones and close to excellent local shopping facilities such as Burnside Village, this is truly an outstanding offering.

For further information or to arrange an inspection please contact Matt Scarce on 0411 185 205 or Carlos Carosi on 0402 561 416.

The above information provided has been furnished to us by the vendor/s. We have not verified whether or not that information is accurate and do not have any belief in one way or the other in its accuracy. We do not accept any responsibility to any person for its accuracy and do no more than pass it on. All interested parties should make and rely upon their own inquiries in order to determine whether or not this information is in fact accurate.



Scale in metres. This drawing is for illustration purposes only. All measurements are approximate and details intended to be relied upon should be independently verified.

Produced by The Fotobase Group