

Sold



21 Gurney Tce, Enfield



Well Presented, Located and Priced!!

Superbly positioned on a low maintenance, corner allotment this neat 3 bedroom home offers spacious accommodation throughout and is ideal for first home buyers, investors or downsizers looking for an affordable option in this up and coming area.

Comprising 3 good size bedrooms, two with built-in's, a generous open plan kitchen and dining adjacent the generous size living room with feature fireplace and split system air conditioning, attractive main bathroom and separate laundry. Other features include stainless steel appliances and ceiling fans.

Outside the home has appealing, low maintenance gardens including a large front lawn area, plenty of parking including an undercover carport and plenty of paved outdoor patio space, perfect for entertaining.

Only minutes to transport, local schools and great shopping as

🛏 3 🚿 1 🚗 1 📏 396 m2

Price	SOLD
Property Type	Residential
Property ID	1424
Land Area	396 m2

Agent Details

Matt Scarce - 0411 185 205

Office Details

Tusmore
457 Greenhill Road Tusmore
SA 5065 Australia
08 8332 1488

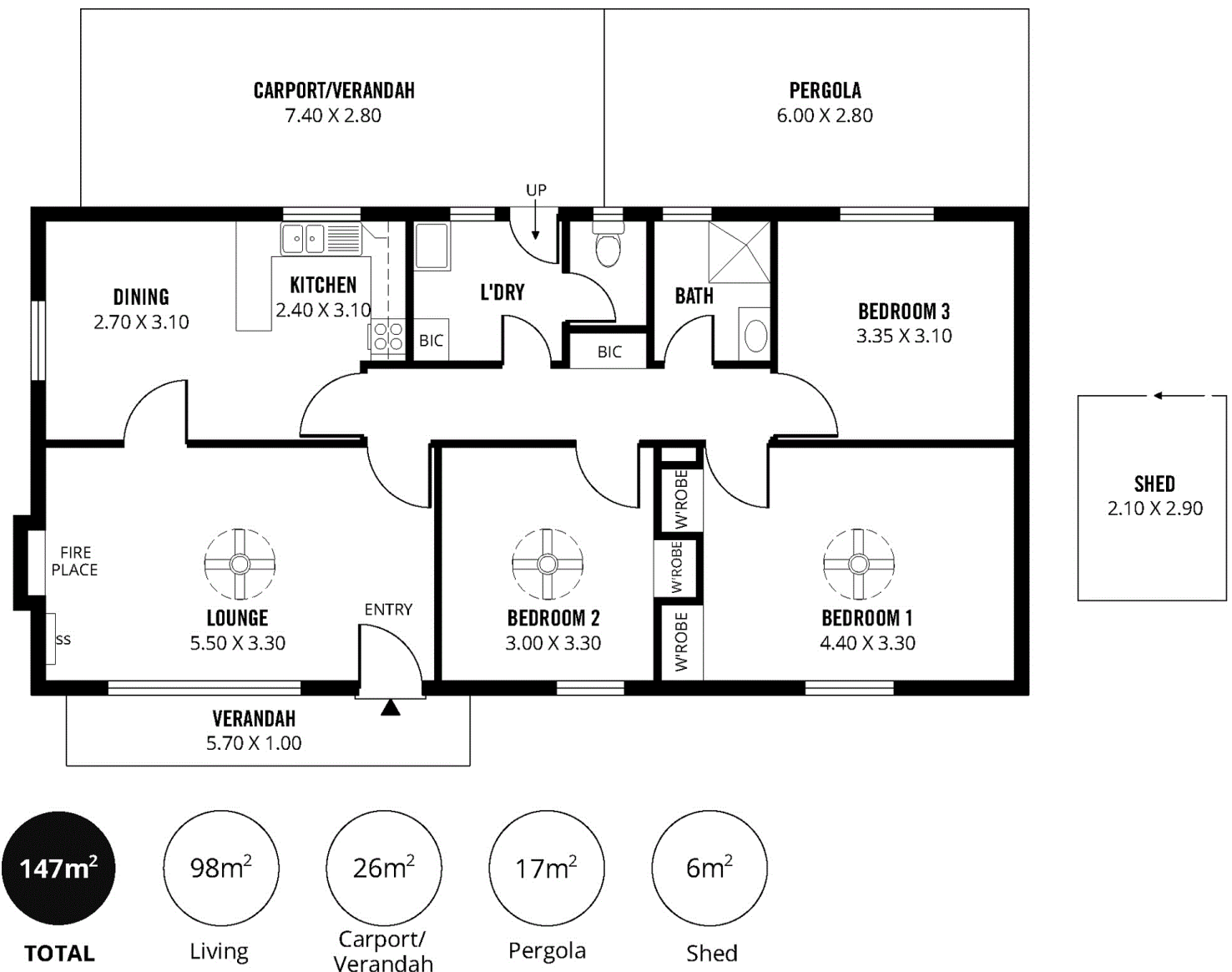
SCARCE
REAL ESTATE

well as easy access into the CBD this is an outstanding opportunity.

Offers close Tuesday 19th March 2019 at 5pm (unless sold prior).

For further information or to arrange an inspection please contact Matt Scarce on 0411 185 205.

The above information provided has been furnished to us by the vendor/s. We have not verified whether or not that information is accurate and do not have any belief in one way or the other in its accuracy. We do not accept any responsibility to any person for its accuracy and do no more than pass it on. All interested parties should make and rely upon their own inquiries in order to determine whether or not this information is in fact accurate.



Scale in metres. This drawing is for illustration purposes only. All measurements are approximate and details intended to be relied upon should be independently verified.

Produced by **The Fotobase Group**