



BEAUTIFULLY PRESENTED FAMILY HOME ON A SUBSTANTIAL 689 SQM BLOCK

Situated on a great size allotment, this home is ideal for anyone looking for their first home, investment or development opportunity (STCC).

Offering three good sized bedrooms all with built in robes, generous living room with split system air conditioning and gas heating, immaculate kitchen with plenty of cupboard space and an adjacent dining area, recently upgraded bathroom, separate toilet and laundry. Other features include ceiling fans in all bedrooms, attractive polished floorboards and roller shutters.

Outside the home offers 2 large undercover outdoor entertaining areas overlooking a fantastic rear lawn and garden with plenty of room for the kids and pets. There is also ample parking with a double length carport.

Situated in the up and coming suburb of Holden Hill just a short distance to public transport, Gilles Plains Shopping Centre and

3 1 2 689 m2

Price	SOLD
Property Type	Residential
Property ID	1412
Land Area	689 m2

Agent Details

Matt Scarce - 0411 185 205
Matt Scarce - 0411 185 205

Office Details

Tusmore
457 Greenhill Road Tusmore
SA 5065 Australia
08 8332 1488

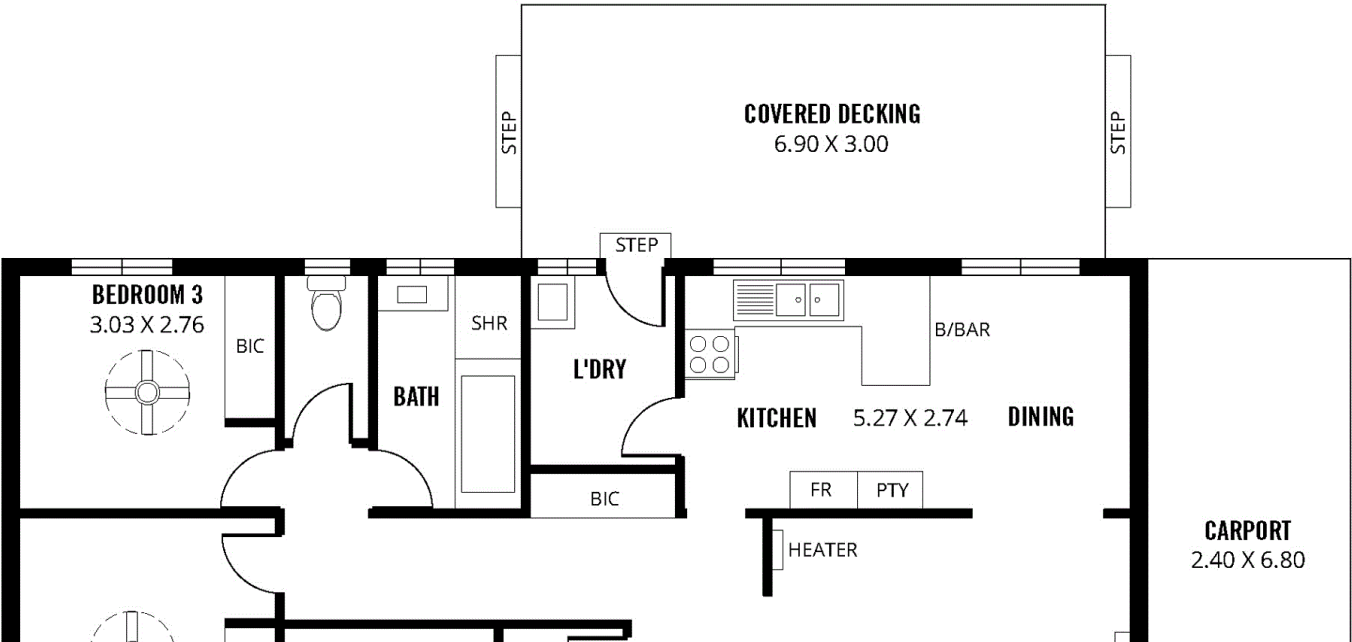
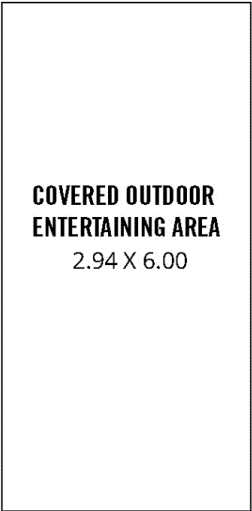
SCARCE
REAL ESTATE

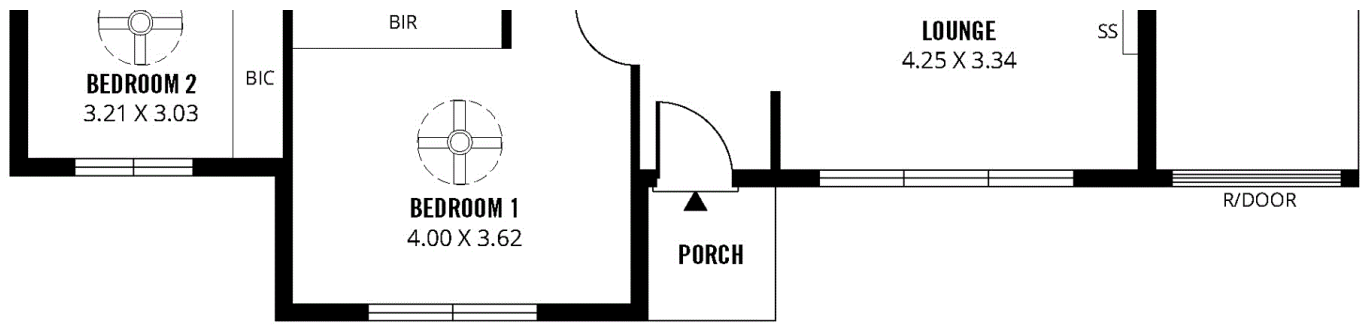
Kildare College this home is superbly located and ready to move straight into and enjoy!

Offers close Thursday 14th February 2019 at 12pm (unless sold prior).

For further information or to arrange an inspection please contact Matt Scarce on 0411 185 205 or Carlos Carosi on 0402 561 416.

The above information provided has been furnished to us by the vendor/s. We have not verified whether or not that information is accurate and do not have any belief in one way or the other in its accuracy. We do not accept any responsibility to any person for its accuracy and do no more than pass it on. All interested parties should make and rely upon their own inquiries in order to determine whether or not this information is in fact accurate.

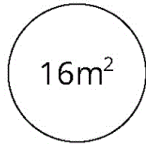




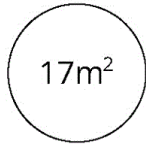
TOTAL



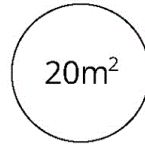
Living



Carport



Ent. Area



Covered Decking



Scale in metres. This drawing is for illustration purposes only. All measurements are approximate and details intended to be relied upon should be independently verified.

Produced by **The Fotobase Group**