

Sold



33 Strathearn Ave, Rostrevor



Original red brick beauty with subdivision potential (STCC)

Walking into this solid red brick home you will think you've stepped back into the 1960's as the home has been impeccably kept holding onto a time of yester year.

Offering three bedrooms, all with built in robes, a large family room with bay window overlooking the front gardens, separate meals area and rear living room or retreat to the 3rd bedroom.

Other features include:

- Original wall unit air-conditioned in the lounge and original gas heater
- Gas up right cooker
- Large outdoor entertaining area with blinds
- Single car garage
- Carport for up to 2 cars end to end
- Solar panels

🚗 3 🏠 1 🚗 2 📏 700 m2

| | |
|---------------|-------------|
| Price | SOLD |
| Property Type | Residential |
| Property ID | 1401 |
| Land Area | 700 m2 |

Agent Details

Matt Scarce - 0411 185 205
Matt Scarce - 0411 185 205

Office Details

Tusmore
457 Greenhill Road Tusmore
SA 5065 Australia
08 8332 1488

SCARCE
REAL ESTATE

Situated on approximately 700sqm this property offers you the potential to subdivide (STCC) and within walking distance to public transport and a short drive to Romeo's Foodland this is a fantastic spot to make your next move or investment.

Contact Nathan Gherghetta for further details

C/T: 5649/45

Council: City of Campbelltown

Year Built: 1965

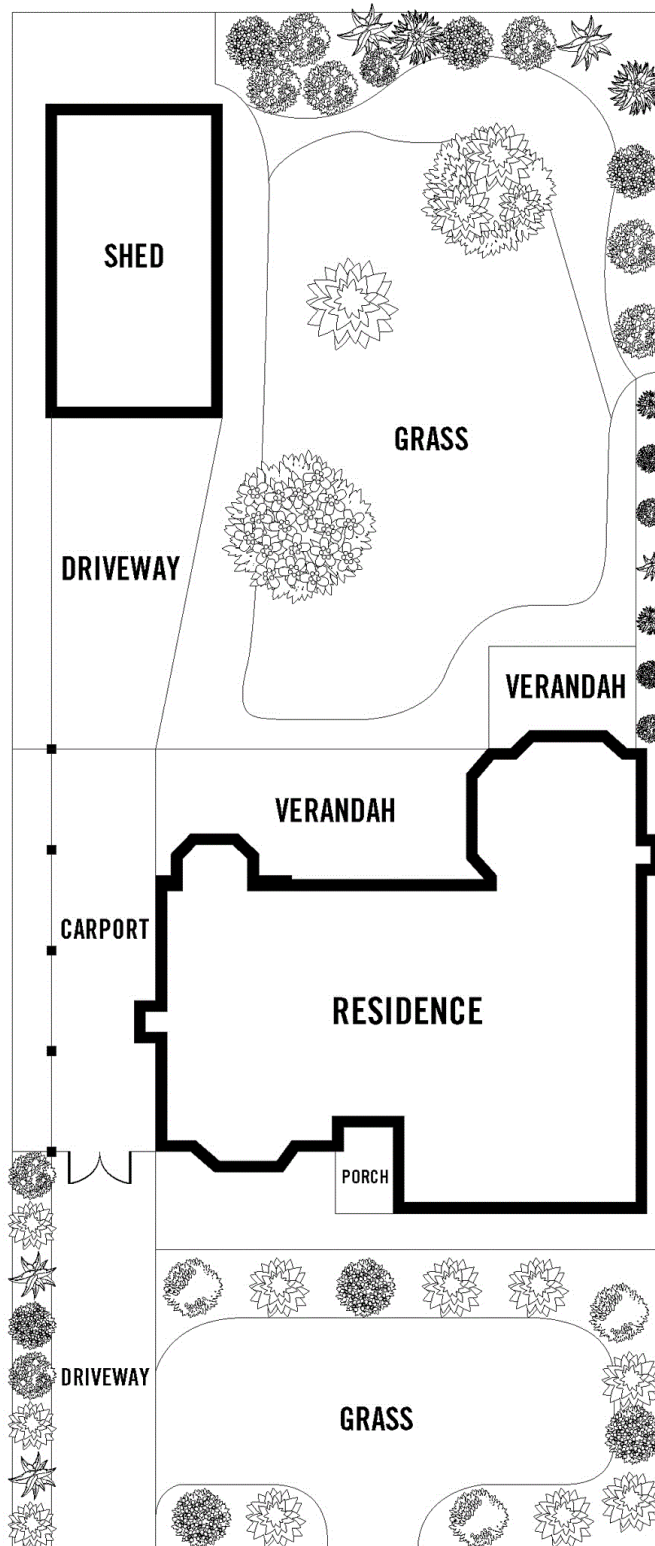
Land: 700sqm approx.

Council Rates: \$1,703.80 p.a.

SA Water: \$358.38 p.q. approx.

ES Levy: \$332.45 p.a.

The above information provided has been furnished to us by the vendor/s. We have not verified whether or not that information is accurate and do not have any belief in one way or the other in its accuracy. We do not accept any responsibility to any person for its accuracy and do no more than pass it on. All interested parties should make and rely upon their own inquiries in order to determine whether or not this information is in fact accurate.

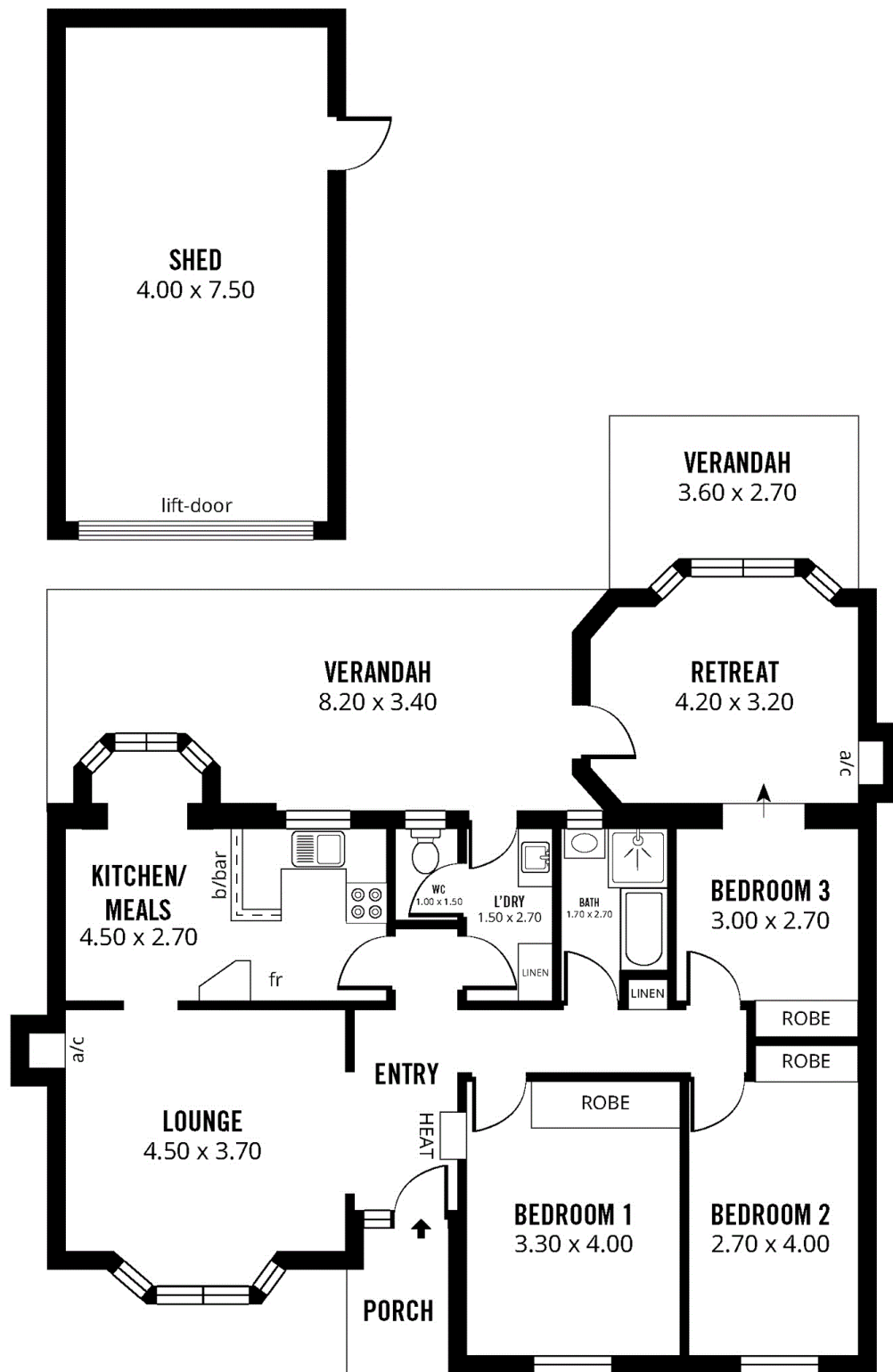


SITE PLAN



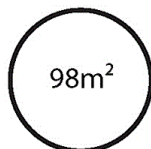
Scale in metres. This drawing is for illustration purposes only. All measurements are approximate and details intended to be relied upon should be independently verified.

Produced by **The Fotobase Group**



168m²

TOTAL



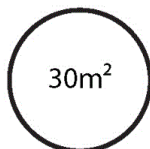
98m²

Living



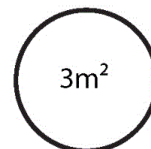
37m²

Verandah



30m²

Shed



3m²

Porch



Scale in metres. This drawing is for illustration purposes only. All measurements are approximate and details intended to be relied upon should be independently verified.

Produced by The Fotobase Group