

Sold



Unit 7, 20 Wheaton Rd, Melrose Park



Large Townhouse with Big Backyard

Tucked away in a quiet location this fantastically presented townhouse is perfect for investors, first homebuyers and downsizers.

Having just under gone a full internal repaint and new flooring throughout this exceptionally well proportioned home offers the new owners so much. On the ground level there is a good sized lounge room with split system air-conditioning, meals/dining room, kitchen with upright electric cooker and dishwasher, laundry and toilet.

Upstairs you have a great sized landing with linen press and potential study nook, three decent sized bedrooms, the master with balcony and a split system air conditioner and a large bathroom with bath.

The home also has an excellent outdoor area with lawn, well-kept garden beds and access to the single car garage.

 3  1  1  142 m2

Price	SOLD
Property Type	Residential
Property ID	1385
Land Area	142 m2

Agent Details

Matt Scarce - 0411 185 205

Office Details

Tusmore
457 Greenhill Road Tusmore
SA 5065 Australia
08 8332 1488

SCARCE
REAL ESTATE

Within only ten minutes' walk to a large Coles Shopping Centre and public transport this is an excellent opportunity to acquire a great home in a sought after area.

Contact Nathan Gherghetta for further details

C/T: 5157/5

Council: City of Mitcham

Year Built: 1993

Land: 142sqm approx.

Council Rates: \$1,039.00 p.a.

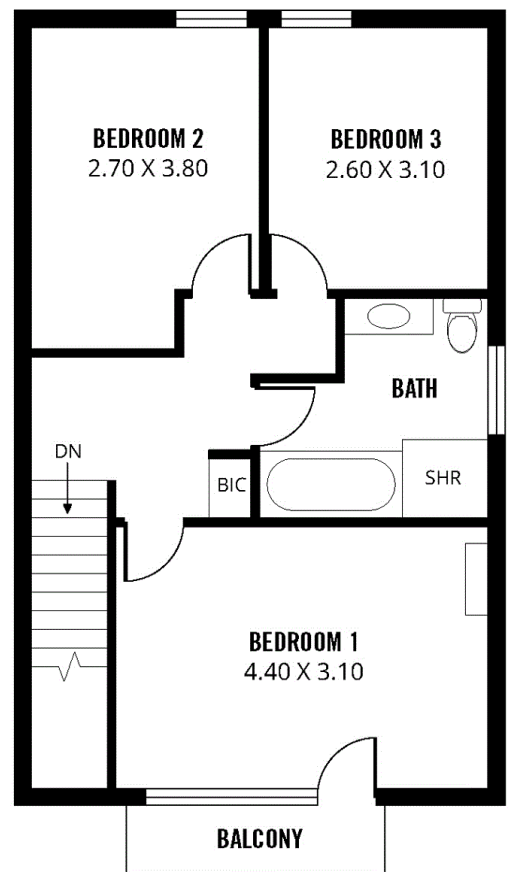
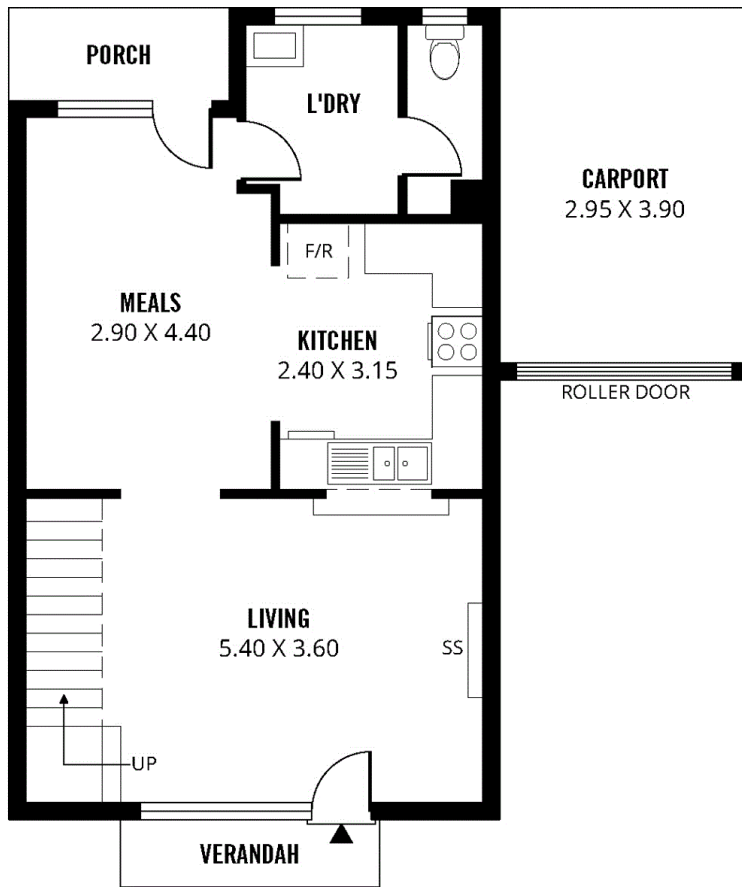
SA Water: \$160.38 p.q. approx.

ES Levy: \$299.75 p.a.

Strata Admin: \$389.00 p.q.

Strata Sinking: \$95.00 p.q.

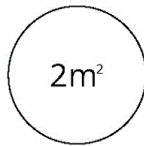
The above information provided has been furnished to us by the vendor/s. We have not verified whether or not that information is accurate and do not have any belief in one way or the other in its accuracy. We do not accept any responsibility to any person for its accuracy and do no more than pass it on. All interested parties should make and rely upon their own inquiries in order to determine whether or not this information is in fact accurate.



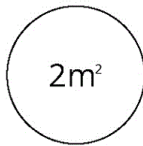
TOTAL



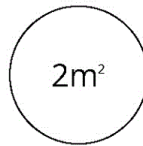
Living



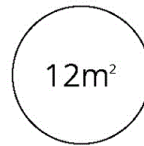
Verandah



Balcony



Porch



Carport

Scale in metres. This drawing is for illustration purposes only. All measurements are approximate and details intended to be relied upon should be independently verified.

Produced by **The Fotobase Group**