



14 Tara Ct, Littlehampton



Quality Home in Envious Location

Offers Close Monday the 10th of December at 5pm (unless sold prior)

Nestled amongst other quality homes in the ever-popular township of Littlehampton, this home offers a lifestyle to be envied by all.

This 2011 Oakford built home is situated on a level 800 sqm allotment with close proximity to local walking trails, views to nearby vineyards, the hills and beyond. Having been lovingly built and looked after by the current owners and featuring quality fixtures and fittings throughout, this property is the beginning of a new chapter for the lucky purchaser looking to make this their home.

Features include:

- 4 bedrooms
- 2 bathrooms

🛏 4 🚿 2 🚗 2 📏 800 m2

Price	SOLD
Property Type	Residential
Property ID	1379
Land Area	800 m2

Agent Details

Matt Scarce - 0411 185 205
Matt Scarce - 0411 185 205

Office Details

Tusmore
457 Greenhill Road Tusmore
SA 5065 Australia
08 8332 1488

SCARCE
REAL ESTATE

- Double car garage with drive through access to backyard
- Large formal lounge
- Open plan living, dining and kitchen
- Large laundry
- Fantastic outdoor living with shade cloth zip track blinds
- RC Split System A/C
- Free standing combustion heater
- Quality tiles throughout living areas
- Carpeted throughout all bedrooms
- 6 x 4 shed with concrete floors and power
- 2 x 2 wood shed
- 16 solar panels with 4.4kw system
- 2 x 9000 litre RW tanks plumbed to home
- Underground watering system

For more information and to arrange a time to view this home, please call David McWilliams on 0424955025.

Council Rates - \$2145.45 P/A

ES Levy - \$187.50 P/A

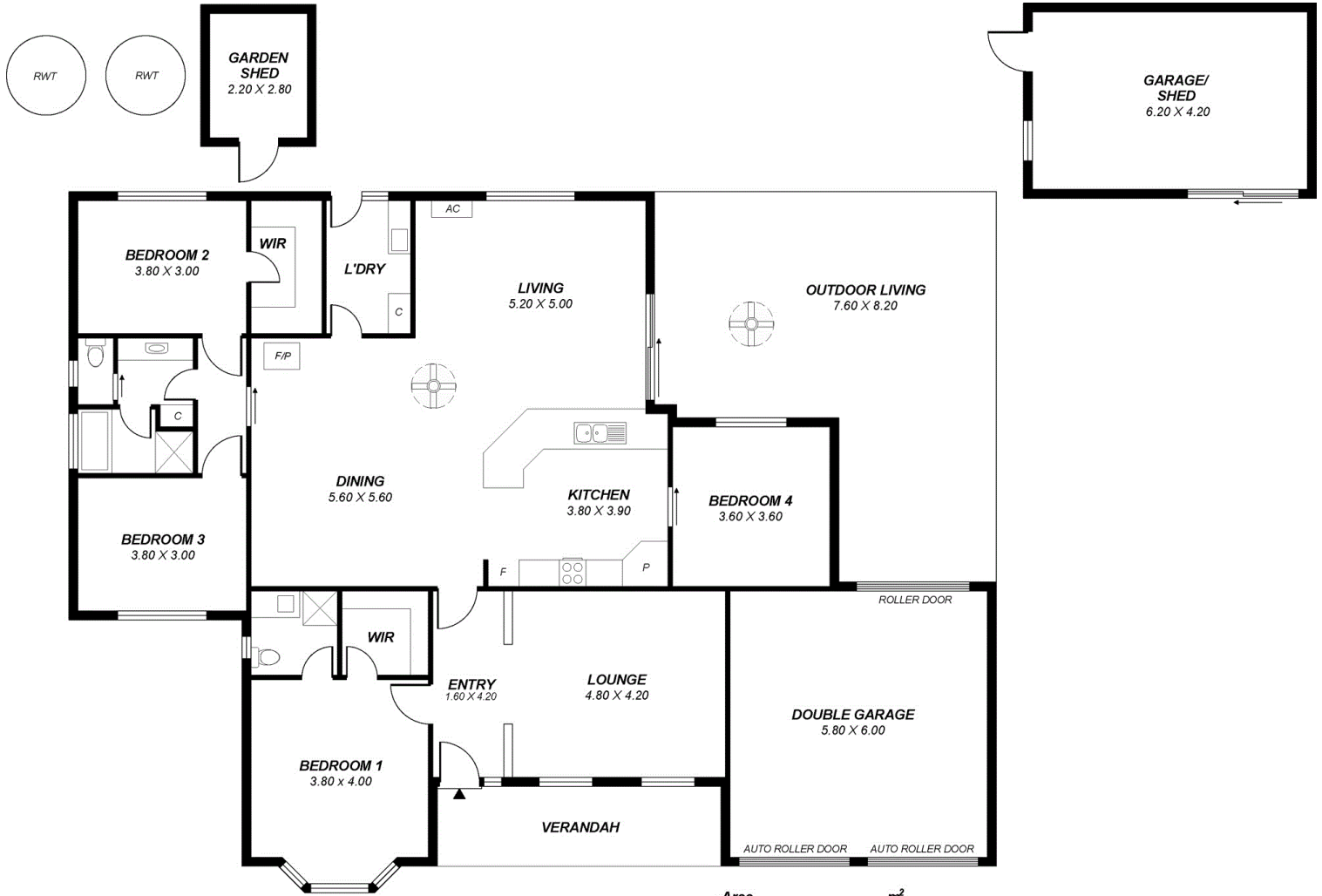
SA Water – \$76.78 P/Q

Land Size – 800 sqm

CT: 6019/246

Council – Mount Barker

The above information provided has been furnished to us by the vendor/s. We have not verified whether or not that information is accurate and do not have any belief in one way or the other in its accuracy. We do not accept any responsibility to any person for its accuracy and do no more than pass it on. All interested parties should make and rely upon their own inquiries in order to determine whether or not this information is in fact accurate.



This drawing is for illustration purposes only.
All measurements are approximate and details intended
to be relied upon should be independently verified.

Area	m ²
Living	194.46
Verandah	11.52
Garage/ Shed	76.36
Outdoor Living	52.25
Total	334.59