

Sold



Unit 5, 379 Glynburn Rd, Kensington Park



#### When Location Matters

Superbly positioned in Kensington Park within a great single storey group of 7, this unit represents fantastic buying for a first home buyer, investor or downsizer.

The unit features beautifully polished hardwood flooring throughout the living area and bedrooms. The living area overlooks the large common lawn area and gardens and has a split system air conditioner.

There are two good sized bedrooms, both with built in robes with the main bedroom also having a second split system air conditioner and a wall mounted TV which is included in the sale. Both bedrooms are serviced by the well maintained bathroom which has a full bath and an updated glass shower frame and adjustable shower head.

The kitchen/meals area is a great space with plenty of cupboard storage, an upright electric oven, Miele dishwasher and room for your washing machine and dryer. The kitchen also has direct

 2  1  1  98 m2

Price	SOLD
Property Type	Residential
Property ID	1339
Land Area	98 m2

#### Agent Details

Matt Scarce - 0411 185 205

#### Office Details

Tusmore  
457 Greenhill Road Tusmore  
SA 5065 Australia  
08 8332 1488

**SCARCE**  
REAL ESTATE

rear access to your own low maintenance courtyard. Outside the property also offers an allocated carport.

Within walking distance to public transport, shopping centres and only a 15 minute drive to the City Centre this represents great buying in one of Adelaide's most sought after suburbs.

Contact Matthew Scarce on 0411 185 205 or Nathan Gherghetta on 0448 206 829 for further information.

C/T: 5676/ 555

Council Zone: Burnside Council

Zone: Residential

Year Built: 1962

Council Rates: \$877.15 p.a.

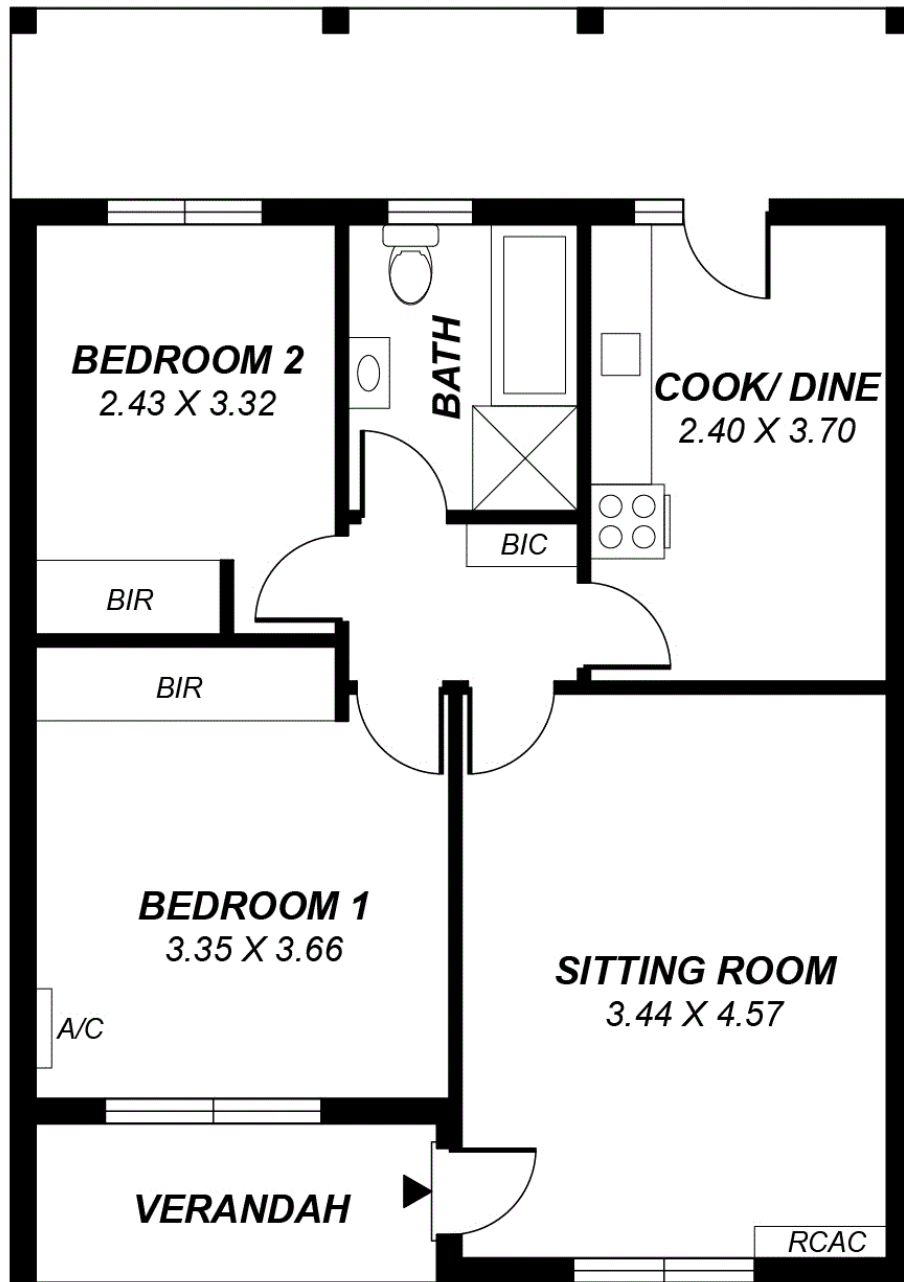
SA Water: \$205.56 p.q.

ES Levy: \$188.65 p.a.

Admin Levy: \$401.55 p.q.

Sinking Levy: \$72 p.q.

The above information provided has been furnished to us by the vendor/s. We have not verified whether or not that information is accurate and do not have any belief in one way or the other in its accuracy. We do not accept any responsibility to any person for its accuracy and do no more than pass it on. All interested parties should make and rely upon their own inquiries in order to determine whether or not this information is in fact accurate.



*This drawing is for illustration purposes only.  
All measurements are approximate and details intended  
to be relied upon should be independently verified.*