

Sold



44 Hallett Rd, Stonyfell



Impressive Family home offering 4 bedrooms, study and a stunning fully tiled swimming pool

Beautifully presented this as new 5 year old Scott Salisbury home offers generous accommodation and high quality features throughout. Superbly positioned overlooking Newland Park with balcony views over the city this is an outstanding home.

Comprising 4 very good size bedrooms, the main with walk in robe, stylish, fully tiled ensuite and direct access to the patio, spacious open plan family room integrating well with the excellent undercover outdoor living area, top class Farquar kitchen with Caesar benches and stainless steel Smeg appliances including a double oven and dishwasher, upstairs retreat opening on to the private balcony, fully tiled main bathroom upstairs and additional powder room downstairs. Other features include Daikin ducted reverse cycle air conditioning, built in robes plus additional storage, security, stunning floating timber floors and separate laundry with built-

 4  2  2  766 m²

Price	SOLD
Property Type	Residential
Property ID	1173
Land Area	766 m ²

Agent Details

Matt Scarce - 0411 185 205

Office Details

Tusmore
457 Greenhill Road Tusmore
SA 5065 Australia
08 8332 1488

SCARCE
REAL ESTATE

ins.

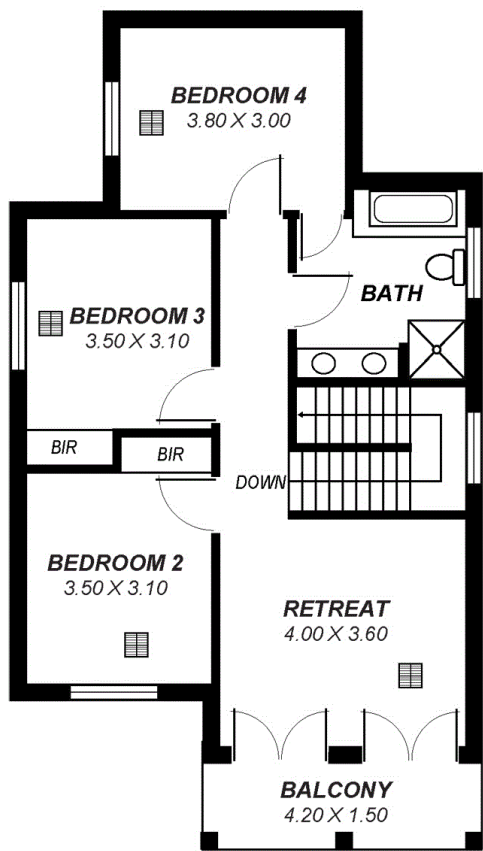
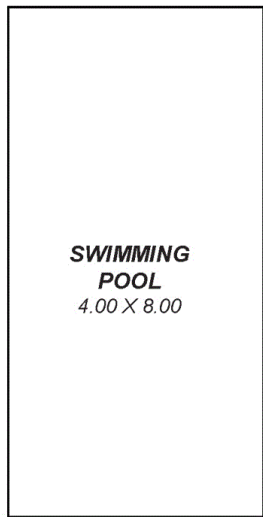
Outside the home is an entertainer's paradise with an all-weather patio under the main roof with ceiling fan, blind and plantation shutters perfect for barbecues with family and friends. The patio overlooks the deep blue tiled pool and the surrounding landscaped lawn and gardens. The double garage has an auto door, internal access and offers ample room for extra storage.

Situated on a large allotment of approximately 766 square metres with all the features you would expect of a home of this calibre this is a fantastic opportunity in this desirable suburb. Within easy access to the city, close to sought after schools, reserves and a minutes' walk from the popular Taylor Blend café this home has the lifestyle to match.

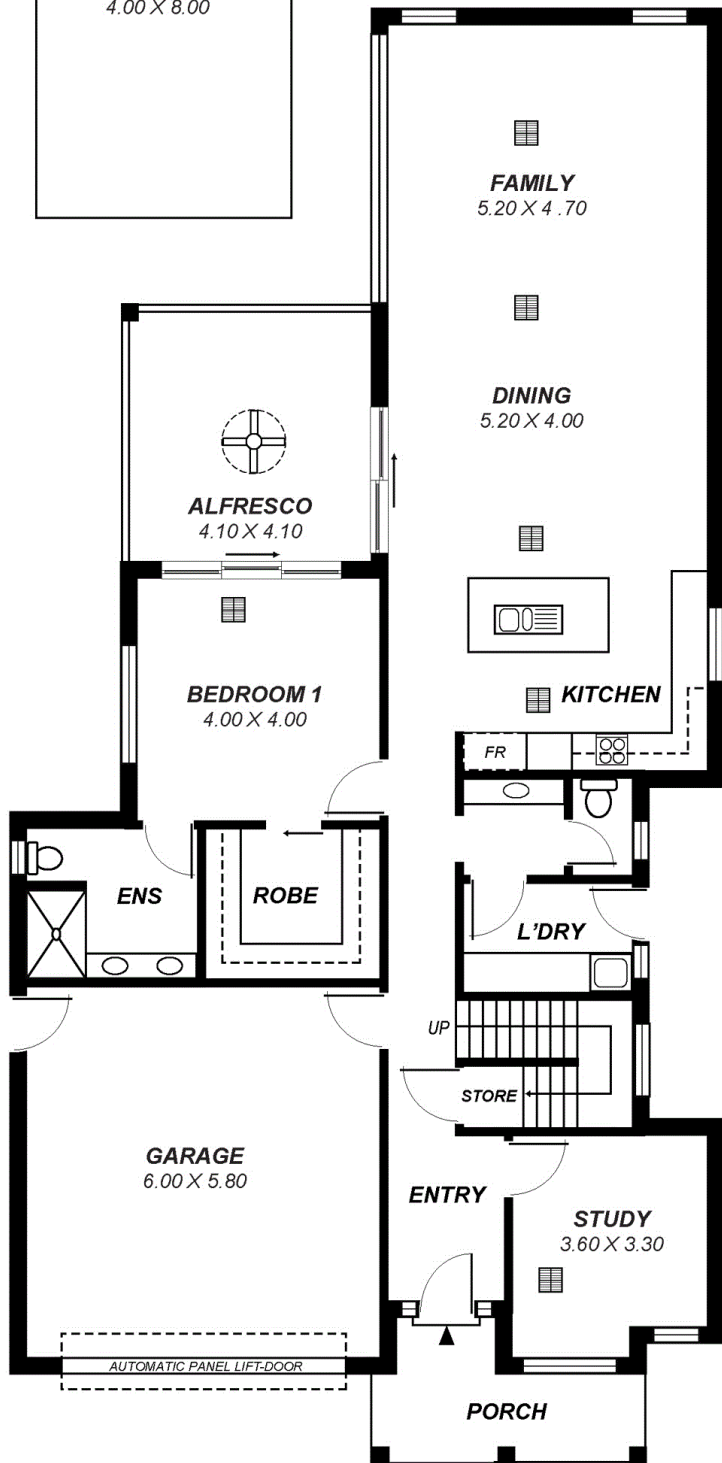
Offers Close Tuesday 10th October 2017 at 5pm (unless sold prior).

For further information or to arrange an inspection please contact Matt Scarce on 0411185205 or Rhys Harris on 0428891679.

The above information provided has been furnished to us by the vendor/s. We have not verified whether or not that information is accurate and do not have any belief in one way or the other in its accuracy. We do not accept any responsibility to any person for its accuracy and do no more than pass it on. All interested parties should make and rely upon their own inquiries in order to determine whether or not this information is in fact accurate.



UPPER LEVEL



LOWER LEVEL

Area	m ²
Lower Living:	126.22
Upper Living:	69.73
Pool:	32.00
Garage:	34.80
Alfresco:	16.81
Porch:	05.49
Verandah:	03.09
Balcony:	06.30
Total:	294.44

*This drawing is for illustration purposes only .
All measurements are approximate and details intended
to be relied upon should be independently verified.*